

Phospho-ErbB3 (Y1222) Antibody
Rabbit mAb
Catalog # AP92264**Specification****Phospho-ErbB3 (Y1222) Antibody - Product Information**

Application	WB, ICC, IP
Primary Accession	P21860
Clonality	Monoclonal
Other Names	
ERBB3; HER3; LCCS2; p180 ErbB3; p45 sErbB3; p85 sErbB3;	
Isotype	Rabbit IgG
Host	Rabbit
Calculated MW	148098 Da

Phospho-ErbB3 (Y1222) Antibody - Additional Information

Dilution	WB~~1:1000 ICC~~N/A IP~~N/A
Purification	Affinity-chromatography
Immunogen	A synthesized peptide derived from human ErbB3
Description	Binds and is activated by neuregulins and NTAK.
Storage Condition and Buffer	Rabbit IgG in phosphate buffered saline , pH 7.4, 150mM NaCl, 0.02% sodium azide and 50% glycerol. Store at +4°C short term. Store at -20°C long term. Avoid freeze / thaw cycle.

Phospho-ErbB3 (Y1222) Antibody - Protein Information**Name** ERBB3**Synonyms** HER3**Function**

Tyrosine-protein kinase that plays an essential role as cell surface receptor for neuregulins. Binds to neuregulin-1 (NRG1) and is activated by it; ligand-binding increases phosphorylation on tyrosine residues and promotes its association with the p85 subunit of phosphatidylinositol 3-kinase (PubMed:20682778). May also be activated by CSPG5 (PubMed:15358134). Involved in the regulation of myeloid cell differentiation (PubMed:27416908).

Cellular Location

[Isoform 1]: Cell membrane; Single-pass type I membrane protein

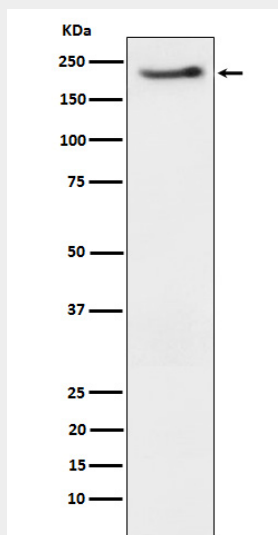
Tissue Location

Epithelial tissues and brain.

Phospho-ErbB3 (Y1222) Antibody - Protocols

Provided below are standard protocols that you may find useful for product applications.

- [Western Blot](#)
- [Blocking Peptides](#)
- [Dot Blot](#)
- [Immunohistochemistry](#)
- [Immunofluorescence](#)
- [Immunoprecipitation](#)
- [Flow Cytometry](#)
- [Cell Culture](#)

Phospho-ErbB3 (Y1222) Antibody - Images

Western blot analysis of Phospho-ErbB3 (Y1222) expression in SKBR3 cell treated with neuregulin.