

**Calpain S1 Antibody**  
Rabbit mAb  
Catalog # AP92278**Specification**

---

**Calpain S1 Antibody - Product Information**

Application	WB, IHC, FC, ICC
Primary Accession	<a href="#">P04632</a>
Reactivity	Rat
Clonality	Monoclonal
<b>Other Names</b>	
Calpain4; CalpainS1; CANP; CANPS; CAPN 4; CAPN S1; CAPN4; CAPNS 1; CAPNS; Capns1; CDPS; CSS1;	
Isotype	Rabbit IgG
Host	Rabbit
Calculated MW	28316 Da

**Calpain S1 Antibody - Additional Information**

Dilution	WB~~1:1000 IHC~~1:100~500 FC~~1:10~50 ICC~~N/A
Purification	Affinity-chromatography
Immunogen	A synthesized peptide derived from human Calpain S1
Description	Regulatory subunit of the calcium-regulated non-lysosomal thiol-protease which catalyzes limited proteolysis of substrates involved in cytoskeletal remodeling and signal transduction.
Storage Condition and Buffer	Rabbit IgG in phosphate buffered saline , pH 7.4, 150mM NaCl, 0.02% sodium azide and 50% glycerol. Store at +4°C short term. Store at -20°C long term. Avoid freeze / thaw cycle.

**Calpain S1 Antibody - Protein Information****Name** CAPNS1**Synonyms** CAPN4, CAPNS**Function**

Regulatory subunit of the calcium-regulated non-lysosomal thiol-protease which catalyzes limited proteolysis of substrates involved in cytoskeletal remodeling and signal transduction. Essential for embryonic development (By similarity).

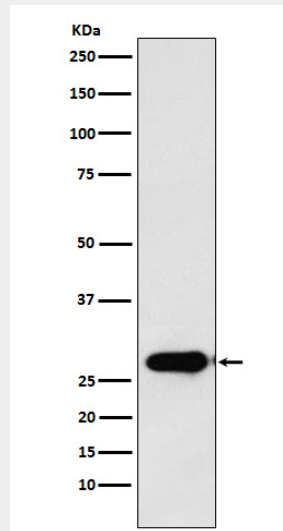
**Cellular Location**

Cytoplasm. Cell membrane. Note=Translocates to the plasma membrane upon calcium binding.

**Calpain S1 Antibody - Protocols**

Provided below are standard protocols that you may find useful for product applications.

- [Western Blot](#)
- [Blocking Peptides](#)
- [Dot Blot](#)
- [Immunohistochemistry](#)
- [Immunofluorescence](#)
- [Immunoprecipitation](#)
- [Flow Cytometry](#)
- [Cell Culture](#)

**Calpain S1 Antibody - Images**

Western blot analysis of Calpain S1 expression in T47D cell lysate.