

**PHAPI2 / APRIL Antibody**  
**Rabbit mAb**  
**Catalog # AP92282****Specification**

---

**PHAPI2 / APRIL Antibody - Product Information**

Application	WB, IHC, FC, ICC
Primary Accession	<a href="#">O92688</a>
Reactivity	Rat
Clonality	Monoclonal

**Other Names**

ANP32B; PAL31; PHAPI2; PHAPI2a; Ssp29;

Isotype	Rabbit IgG
Host	Rabbit
Calculated MW	28788 Da

**PHAPI2 / APRIL Antibody - Additional Information**

Dilution	WB~~1:1000 IHC~~1:100~500 FC~~1:10~50 ICC~~N/A
Purification	Affinity-chromatography
Immunogen	A synthesized peptide derived from human PHAPI2 / APRIL
Description	Multifunctional protein working as a cell cycle progression factor as well as a cell survival factor. Required for the progression from the G1 to the S phase.
Storage Condition and Buffer	Rabbit IgG in phosphate buffered saline , pH 7.4, 150mM NaCl, 0.02% sodium azide and 50% glycerol. Store at +4°C short term. Store at -20°C long term. Avoid freeze / thaw cycle.

**PHAPI2 / APRIL Antibody - Protein Information****Name** ANP32B**Synonyms** APRIL, PHAPI2**Function**

Multifunctional protein that is involved in the regulation of many processes including cell proliferation, apoptosis, cell cycle progression or transcription (PubMed:<a href="http://www.uniprot.org/citations/18039846" target="\_blank">18039846</a>, PubMed:<a href="http://www.uniprot.org/citations/20015864" target="\_blank">20015864</a>). Regulates the proliferation of neuronal stem cells, differentiation of leukemic cells and progression from G1 to S phase of the cell cycle. As negative regulator of caspase-3-dependent apoptosis, may act as

an antagonist of ANP32A in regulating tissue homeostasis (PubMed:<a href="http://www.uniprot.org/citations/20015864" target="\_blank">20015864</a>). Exhibits histone chaperone properties, able to recruit histones to certain promoters, thus regulating the transcription of specific genes (PubMed:<a href="http://www.uniprot.org/citations/18039846" target="\_blank">18039846</a>, PubMed:<a href="http://www.uniprot.org/citations/20538007" target="\_blank">20538007</a>). Also plays an essential role in the nucleocytoplasmic transport of specific mRNAs via the uncommon nuclear mRNA export receptor XPO1/CRM1 (PubMed:<a href="http://www.uniprot.org/citations/17178712" target="\_blank">17178712</a>). Participates in the regulation of adequate adaptive immune responses by acting on mRNA expression and cell proliferation (By similarity).

#### Cellular Location

[Isoform 1]: Nucleus. Cytoplasm Note=Accumulates in the nuclei at the S phase.

#### Tissue Location

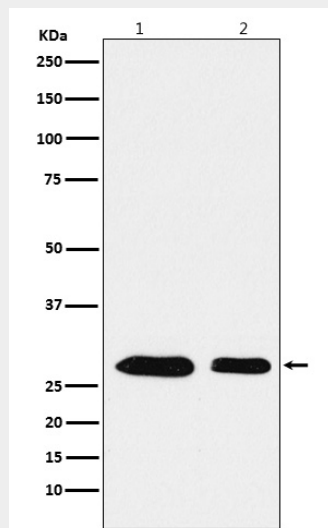
Expressed in heart, lung, pancreas, prostate and in spleen, thymus and placenta.

### PHAPI2 / APRIL Antibody - Protocols

Provided below are standard protocols that you may find useful for product applications.

- [Western Blot](#)
- [Blocking Peptides](#)
- [Dot Blot](#)
- [Immunohistochemistry](#)
- [Immunofluorescence](#)
- [Immunoprecipitation](#)
- [Flow Cytometry](#)
- [Cell Culture](#)

### PHAPI2 / APRIL Antibody - Images



Western blot analysis of PHAPI2 / APRIL expression in (1) Jurkat cell lysate; (2) RAW264.7 cell lysate.