

Cyclophilin 40 Antibody
Rabbit mAb
Catalog # AP92292**Specification****Cyclophilin 40 Antibody - Product Information**

Application	WB, IHC, FC, ICC
Primary Accession	Q08752
Reactivity	Rat
Clonality	Monoclonal
Other Names	
Cyclophilin40; CyclophilinD; CYP40; CYPD; PPlase; PPlase D; Ppid; Rotamase; Rotamase D;	
Isotype	Rabbit IgG
Host	Rabbit
Calculated MW	40764 Da

Cyclophilin 40 Antibody - Additional Information

Dilution	WB~~1:1000 IHC~~1:100~500 FC~~1:10~50 ICC~~N/A
Purification	Affinity-chromatography
Immunogen	A synthesized peptide derived from human Cyclophilin 40
Description	PPlases accelerate the folding of proteins. It catalyzes the cis-trans isomerization of proline imidic peptide bonds in oligopeptides.
Storage Condition and Buffer	Rabbit IgG in phosphate buffered saline , pH 7.4, 150mM NaCl, 0.02% sodium azide and 50% glycerol. Store at +4°C short term. Store at -20°C long term. Avoid freeze / thaw cycle.

Cyclophilin 40 Antibody - Protein Information**Name** PPID ([HGNC:9257](#))**Synonyms** CYP40, CYPD**Function**

PPlase that catalyzes the cis-trans isomerization of proline imidic peptide bonds in oligopeptides and may therefore assist protein folding (PubMed:11350175, PubMed:20676357). Proposed to act as a co- chaperone in HSP90 complexes such as in unligated steroid receptors heterocomplexes. Different co-chaperones seem to compete for association with HSP90 thus

establishing distinct HSP90-co-chaperone- receptor complexes with the potential to exert tissue-specific receptor activity control. May have a preference for estrogen receptor complexes and is not found in glucocorticoid receptor complexes. May be involved in cytoplasmic dynein-dependent movement of the receptor from the cytoplasm to the nucleus. May regulate MYB by inhibiting its DNA- binding activity. Involved in regulation of AHR signaling by promoting the formation of the AHR:ARNT dimer; the function is independent of HSP90 but requires the chaperone activity. Involved in regulation of UV radiation-induced apoptosis. Promotes cell viability in anaplastic lymphoma kinase-positive anaplastic large-cell lymphoma (ALK+ ALCL) cell lines.

Cellular Location

Cytoplasm. Nucleus, nucleolus. Nucleus, nucleoplasm

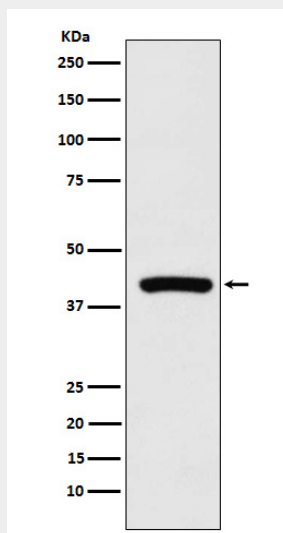
Tissue Location

Widely expressed.

Cyclophilin 40 Antibody - Protocols

Provided below are standard protocols that you may find useful for product applications.

- [Western Blot](#)
- [Blocking Peptides](#)
- [Dot Blot](#)
- [Immunohistochemistry](#)
- [Immunofluorescence](#)
- [Immunoprecipitation](#)
- [Flow Cytometry](#)
- [Cell Culture](#)

Cyclophilin 40 Antibody - Images

Western blot analysis of Cyclophilin 40 expression in K562 cell lysate.