

VPS18 Antibody
Rabbit mAb
Catalog # AP92294**Specification**

VPS18 Antibody - Product Information

Application	WB, FC, ICC
Primary Accession	O9P253
Reactivity	Rat
Clonality	Monoclonal
Other Names	
hVPS18; PEP3; vps18;	
Isotype	Rabbit IgG
Host	Rabbit
Calculated MW	110186 Da

VPS18 Antibody - Additional Information

Dilution	WB~~1:1000 FC~~1:10~50 ICC~~N/A
Purification	Affinity-chromatography
Immunogen	A synthesized peptide derived from human VPS18
Description	May play a role in vesicle-mediated protein trafficking to lysosomal compartments and in membrane docking/fusion reactions of late endosomes/lysosomes.
Storage Condition and Buffer	Rabbit IgG in phosphate buffered saline , pH 7.4, 150mM NaCl, 0.02% sodium azide and 50% glycerol. Store at +4°C short term. Store at -20°C long term. Avoid freeze / thaw cycle.

VPS18 Antibody - Protein Information**Name** VPS18 ([HGNC:15972](#))**Synonyms** KIAA1475**Function**

Plays a role in vesicle-mediated protein trafficking to lysosomal compartments including the endocytic membrane transport and autophagic pathways. Believed to act as a core component of the putative HOPS and CORVET endosomal tethering complexes which are proposed to be involved in the Rab5-to-Rab7 endosome conversion probably implicating MON1A/B, and via binding SNAREs and SNARE complexes to mediate tethering and docking events during SNARE-mediated membrane fusion. The HOPS complex is proposed to be recruited to Rab7 on the late endosomal membrane and to regulate late endocytic, phagocytic and autophagic traffic

towards lysosomes. The CORVET complex is proposed to function as a Rab5 effector to mediate early endosome fusion probably in specific endosome subpopulations (PubMed:11382755, PubMed:23351085, PubMed:24554770, PubMed:25783203). Required for fusion of endosomes and autophagosomes with lysosomes (PubMed:25783203). Involved in dendrite development of Pukinje cells (By similarity).

Cellular Location

Late endosome membrane; Peripheral membrane protein; Cytoplasmic side. Lysosome membrane; Peripheral membrane protein; Cytoplasmic side. Early endosome Cytoplasmic vesicle, autophagosome. Cytoplasmic vesicle, clathrin-coated vesicle. Note=Cytoplasmic, peripheral membrane protein associated with early endosomes and late endosomes/lysosomes

Tissue Location

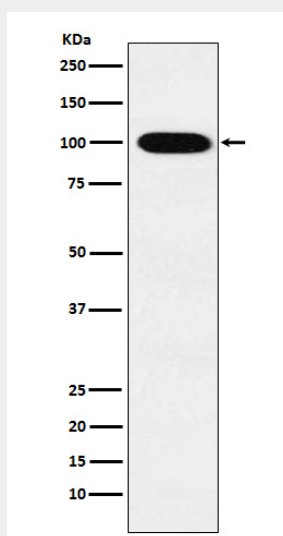
Ubiquitous. Expression was highest in heart and low in lung.

VPS18 Antibody - Protocols

Provided below are standard protocols that you may find useful for product applications.

- [Western Blot](#)
- [Blocking Peptides](#)
- [Dot Blot](#)
- [Immunohistochemistry](#)
- [Immunofluorescence](#)
- [Immunoprecipitation](#)
- [Flow Cytometry](#)
- [Cell Culture](#)

VPS18 Antibody - Images



Western blot analysis of VPS18 expression in K562 cell lysate.