

MAD1 Antibody
Rabbit mAb
Catalog # AP92296**Specification****MAD1 Antibody - Product Information**

Application	WB
Primary Accession	O9Y6D9
Reactivity	Rat
Clonality	Monoclonal
Other Names	
hMAD1; HsMAD1; MAD1; MAD1L1; PIG9; TP53I9; TXBP181;	
Isotype	Rabbit IgG
Host	Rabbit
Calculated MW	83067 Da

MAD1 Antibody - Additional Information

Dilution	WB~~1:1000
Purification	Affinity-chromatography
Immunogen	A synthesized peptide derived from human MAD1
Description	Component of the spindle-assembly checkpoint that prevents the onset of anaphase until all chromosomes are properly aligned at the metaphase plate. Rabbit IgG in phosphate buffered saline , pH 7.4, 150mM NaCl, 0.02% sodium azide and 50% glycerol. Store at +4°C short term. Store at -20°C long term. Avoid freeze / thaw cycle.
Storage Condition and Buffer	

MAD1 Antibody - Protein Information**Name** MAD1L1**Synonyms** MAD1, TXBP181**Function**

Component of the spindle-assembly checkpoint that prevents the onset of anaphase until all chromosomes are properly aligned at the metaphase plate (PubMed: [10049595](http://www.uniprot.org/citations/10049595), PubMed: [20133940](http://www.uniprot.org/citations/20133940), PubMed: [29162720](http://www.uniprot.org/citations/29162720)). Forms a heterotetrameric complex with the closed conformation form of MAD2L1 (C-MAD2) at unattached kinetochores during prometaphase, recruits an open conformation of MAD2L1 (O-MAD2) and promotes the conversion of O-MAD2 to C-MAD2, which ensures mitotic checkpoint signaling (PubMed: [29162720](http://www.uniprot.org/citations/29162720)).

Cellular Location

Nucleus. Chromosome, centromere, kinetochore. Nucleus envelope Cytoplasm, cytoskeleton, microtubule organizing center, centrosome. Cytoplasm, cytoskeleton, spindle. Cytoplasm, cytoskeleton, spindle pole. Note=Co- localizes with TPR at the nucleus envelope during interphase and throughout the cell cycle (PubMed:18981471, PubMed:22351768). From the beginning to the end of mitosis, it is seen to move from a diffusely nuclear distribution to the centrosome, to the spindle midzone and finally to the midbody (PubMed:9546394). Localizes to kinetochores during prometaphase (PubMed:22351768, PubMed:29162720). Does not localize to kinetochores during metaphase (PubMed:29162720) Colocalizes with NEK2 at the kinetochore (PubMed:14978040). Colocalizes with IK at spindle poles during metaphase and anaphase (PubMed:22351768).

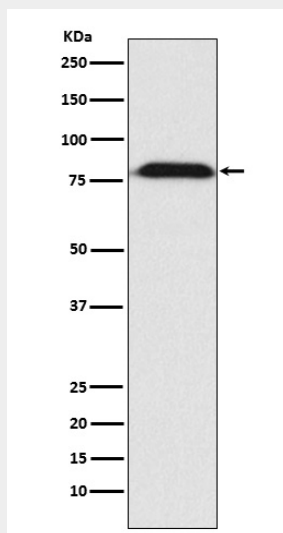
Tissue Location

[Isoform 1]: Expressed in hepatocellular carcinomas and hepatoma cell lines (at protein level)

MAD1 Antibody - Protocols

Provided below are standard protocols that you may find useful for product applications.

- [Western Blot](#)
- [Blocking Peptides](#)
- [Dot Blot](#)
- [Immunohistochemistry](#)
- [Immunofluorescence](#)
- [Immunoprecipitation](#)
- [Flow Cytometry](#)
- [Cell Culture](#)

MAD1 Antibody - Images

Western blot analysis of MAD1 expression in A431 cell lysate.