

MYL9 Antibody
Rabbit mAb
Catalog # AP92298**Specification**

MYL9 Antibody - Product Information

Application	WB, IHC, IP
Primary Accession	P24844
Reactivity	Rat
Clonality	Monoclonal
Other Names	
MLC2; CMH10;	

Isotype	Rabbit IgG
Host	Rabbit
Calculated MW	19827 Da

MYL9 Antibody - Additional Information

Dilution	WB~~1:1000 IHC~~1:100~500 IP~~N/A
Purification	Affinity-chromatography
Immunogen	A synthesized peptide derived from human MYL9
Description	Myosin regulatory subunit that plays an important role in regulation of both smooth muscle and nonmuscle cell contractile activity via its phosphorylation. Implicated in cytokinesis, receptor capping, and cell locomotion.
Storage Condition and Buffer	Rabbit IgG in phosphate buffered saline , pH 7.4, 150mM NaCl, 0.02% sodium azide and 50% glycerol. Store at +4°C short term. Store at -20°C long term. Avoid freeze / thaw cycle.

MYL9 Antibody - Protein Information**Name** MYL9**Synonyms** MLC2, MRLC1, MYRL2**Function**

Myosin regulatory subunit that plays an important role in regulation of both smooth muscle and nonmuscle cell contractile activity via its phosphorylation. Implicated in cytokinesis, receptor capping, and cell locomotion (PubMed:<[a href="http://www.uniprot.org/citations/11942626"](http://www.uniprot.org/citations/11942626)target="_blank">11942626, PubMed:<[a href="http://www.uniprot.org/citations/2526655"](http://www.uniprot.org/citations/2526655)target="_blank">2526655). In myoblasts, may regulate PIEZO1-dependent cortical

actomyosin assembly involved in myotube formation (By similarity).

Cellular Location

Cytoplasm, cytoskeleton {ECO:0000250|UniProtKB:Q9CQ19}. Cytoplasm, cell cortex {ECO:0000250|UniProtKB:Q9CQ19}. Note=Colocalizes with F-actin, MYH9 and PIEZO1 at the actomyosin cortex in myoblasts {ECO:0000250|UniProtKB:Q9CQ19}

Tissue Location

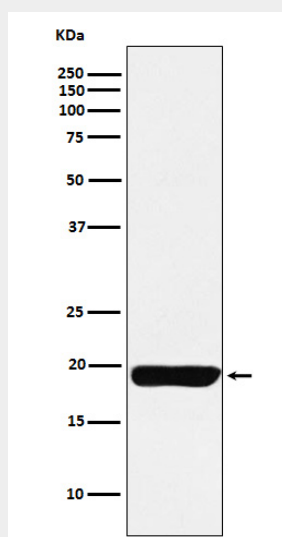
Smooth muscle tissues and in some, but not all, nonmuscle cells.

MYL9 Antibody - Protocols

Provided below are standard protocols that you may find useful for product applications.

- [Western Blot](#)
- [Blocking Peptides](#)
- [Dot Blot](#)
- [Immunohistochemistry](#)
- [Immunofluorescence](#)
- [Immunoprecipitation](#)
- [Flow Cytometry](#)
- [Cell Culture](#)

MYL9 Antibody - Images



Western blot analysis of MYL9 expression in Human uterus lysate.