

CLDN18 Antibody (C-term)
Affinity Purified Rabbit Polyclonal Antibody (Pab)
Catalog # AP9229b**Specification**

CLDN18 Antibody (C-term) - Product Information

Application	WB, FC,E
Primary Accession	P56856
Reactivity	Human
Host	Rabbit
Clonality	Polyclonal
Isotype	Rabbit IgG
Antigen Region	231-259

CLDN18 Antibody (C-term) - Additional Information**Gene ID** 51208**Other Names**

Claudin-18, CLDN18

Target/Specificity

This CLDN18 antibody is generated from rabbits immunized with a KLH conjugated synthetic peptide between 231-259 amino acids of human CLDN18.

Dilution

WB~~1:2000

FC~~1:10~50

E~~Use at an assay dependent concentration.

Format

Purified polyclonal antibody supplied in PBS with 0.09% (W/V) sodium azide. This antibody is purified through a protein A column, followed by peptide affinity purification.

Storage

Maintain refrigerated at 2-8°C for up to 2 weeks. For long term storage store at -20°C in small aliquots to prevent freeze-thaw cycles.

Precautions

CLDN18 Antibody (C-term) is for research use only and not for use in diagnostic or therapeutic procedures.

CLDN18 Antibody (C-term) - Protein Information**Name** CLDN18

Function Involved in alveolar fluid homeostasis via regulation of alveolar epithelial tight junction composition and therefore ion transport and solute permeability, potentially via downstream

regulation of the actin cytoskeleton organization and beta-2-adrenergic signaling (By similarity). Required for lung alveolarization and maintenance of the paracellular alveolar epithelial barrier (By similarity). Acts to maintain epithelial progenitor cell proliferation and organ size, via regulation of YAP1 localization away from the nucleus and thereby restriction of YAP1 target gene transcription (By similarity). Acts as a negative regulator of RANKL-induced osteoclast differentiation, potentially via relocation of TJP2/ZO-2 away from the nucleus, subsequently involved in bone resorption in response to calcium deficiency (By similarity). Mediates the osteoprotective effects of estrogen, potentially via acting downstream of estrogen signaling independently of RANKL signaling pathways (By similarity).

Cellular Location

Cell junction, tight junction {ECO:0000250|UniProtKB:P56857}. Cell membrane {ECO:0000250|UniProtKB:P56857}; Multi-pass membrane protein. Note=Localizes to tight junctions in epithelial cells {ECO:0000250|UniProtKB:P56857} [Isoform A2]: Cell junction, tight junction {ECO:0000250|UniProtKB:P56857}. Lateral cell membrane {ECO:0000250|UniProtKB:P56857}

Tissue Location

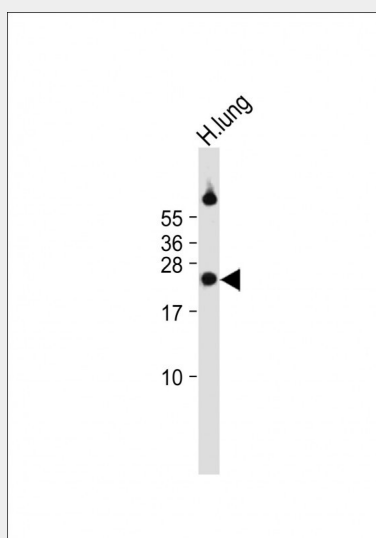
[Isoform A1]: Expression is restricted to the lung.

CLDN18 Antibody (C-term) - Protocols

Provided below are standard protocols that you may find useful for product applications.

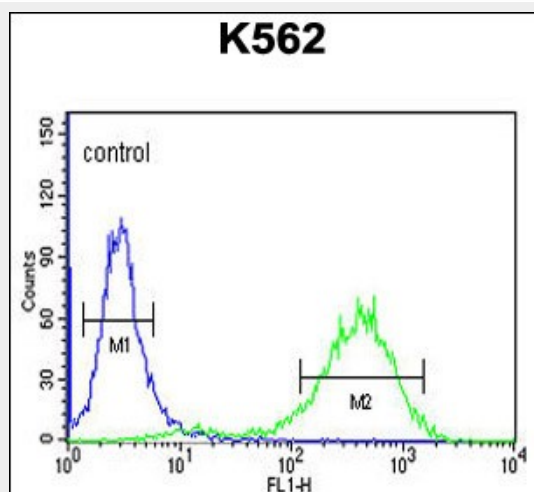
- [Western Blot](#)
- [Blocking Peptides](#)
- [Dot Blot](#)
- [Immunohistochemistry](#)
- [Immunofluorescence](#)
- [Immunoprecipitation](#)
- [Flow Cytometry](#)
- [Cell Culture](#)

CLDN18 Antibody (C-term) - Images



Anti-CLDN18 Antibody (C-term) at 1:2000 dilution + Human lung tissue lysate Lysates/proteins at 20 µg per lane. Secondary Goat Anti-Rabbit IgG, (H+L), Peroxidase conjugated at 1/10000

dilution. Predicted band size : 28 kDa Blocking/Dilution buffer: 5% NFDM/TBST.



CLDN18 Antibody (C-term) (Cat. #AP9229b) flow cytometric analysis of K562 cells (right histogram) compared to a negative control (left histogram). FITC-conjugated goat-anti-rabbit secondary antibodies were used for the analysis.

CLDN18 Antibody (C-term) - Background

CLDN18 belongs to the large claudin family of proteins, which form tight junction strands in epithelial cells.

CLDN18 Antibody (C-term) - References

Sahin, U., et al., Clin. Cancer Res. 14 (23), 7624-7634 (2008)
Zwiers, A., et al., Inflamm. Bowel Dis. 14 (12), 1652-1659 (2008)