

ATP1A3 Antibody
Rabbit mAb
Catalog # AP92302**Specification**

ATP1A3 Antibody - Product Information

Application	WB
Primary Accession	P13637
Reactivity	Rat
Clonality	Monoclonal
Other Names	
AHC2; Atp1a3; DYT12; RDP;	
Isotype	Rabbit IgG
Host	Rabbit
Calculated MW	111749 Da

ATP1A3 Antibody - Additional Information

Dilution	WB~~1:1000
Purification	Affinity-chromatography
Immunogen	A synthesized peptide derived from human ATP1A3
Description	This is the catalytic component of the active enzyme, which catalyzes the hydrolysis of ATP coupled with the exchange of sodium and potassium ions across the plasma membrane. This action creates the electrochemical gradient of sodium and potassium ions, providing the energy for active transport of various nutrients.
Storage Condition and Buffer	Rabbit IgG in phosphate buffered saline , pH 7.4, 150mM NaCl, 0.02% sodium azide and 50% glycerol. Store at +4°C short term. Store at -20°C long term. Avoid freeze / thaw cycle.

ATP1A3 Antibody - Protein Information**Name** ATP1A3**Function**

This is the catalytic component of the active enzyme, which catalyzes the hydrolysis of ATP coupled with the exchange of sodium and potassium ions across the plasma membrane. This action creates the electrochemical gradient of sodium and potassium ions, providing the energy for active transport of various nutrients.

Cellular Location

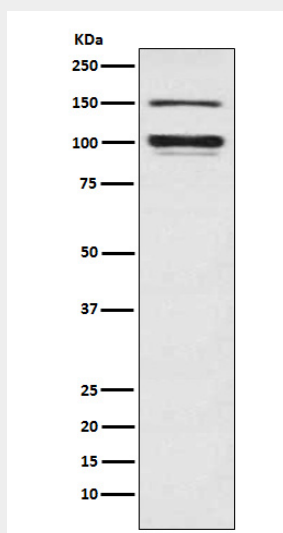
Cell membrane; Multi-pass membrane protein

ATP1A3 Antibody - Protocols

Provided below are standard protocols that you may find useful for product applications.

- [Western Blot](#)
- [Blocking Peptides](#)
- [Dot Blot](#)
- [Immunohistochemistry](#)
- [Immunofluorescence](#)
- [Immunoprecipitation](#)
- [Flow Cytometry](#)
- [Cell Culture](#)

ATP1A3 Antibody - Images



Western blot analysis of ATP1A3 expression in Rat brain lysate.