

CDKN2C Antibody
Rabbit mAb
Catalog # AP92303**Specification**

CDKN2C Antibody - Product Information

Application	WB, IHC, ICC, IP
Primary Accession	P42773
Reactivity	Rat
Clonality	Monoclonal
Other Names	
Cdkn2c; CDKN6; INK4C; p18; p18 inhibits CDK4; p18 INK4c; p18 INK6; p18-INK4c; p18-INK6;	
Isotype	Rabbit IgG
Host	Rabbit
Calculated MW	18127 Da

CDKN2C Antibody - Additional Information

Dilution	WB~~1:1000 IHC~~1:100~500 ICC~~N/A IP~~N/A
Purification	Affinity-chromatography
Immunogen	A synthesized peptide derived from human CDKN2C
Description	Interacts strongly with CDK6, weakly with CDK4. Inhibits cell growth and proliferation with a correlated dependence on endogenous retinoblastoma protein RB.
Storage Condition and Buffer	Rabbit IgG in phosphate buffered saline , pH 7.4, 150mM NaCl, 0.02% sodium azide and 50% glycerol. Store at +4°C short term. Store at -20°C long term. Avoid freeze / thaw cycle.

CDKN2C Antibody - Protein Information**Name** CDKN2C**Synonyms** CDKN6**Function**

Interacts strongly with CDK6, weakly with CDK4. Inhibits cell growth and proliferation with a correlated dependence on endogenous retinoblastoma protein RB.

Tissue Location

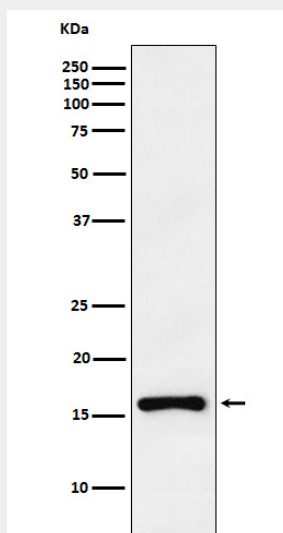
Highest levels found in skeletal muscle. Also found in pancreas and heart

CDKN2C Antibody - Protocols

Provided below are standard protocols that you may find useful for product applications.

- [Western Blot](#)
- [Blocking Peptides](#)
- [Dot Blot](#)
- [Immunohistochemistry](#)
- [Immunofluorescence](#)
- [Immunoprecipitation](#)
- [Flow Cytometry](#)
- [Cell Culture](#)

CDKN2C Antibody - Images



Western blot analysis of CDKN2C expression in Ramos cell lysate.