

CCL19 Antibody
Rabbit mAb
Catalog # AP92307**Specification**

CCL19 Antibody - Product Information

Application	WB, FC
Primary Accession	Q99731
Clonality	Monoclonal
Other Names	
CCL19; CK beta 11; CKb11; ELC; Exodus3; MIP3 beta; MIP3B; SCYA19;	
Isotype	Rabbit IgG
Host	Rabbit
Calculated MW	10993 Da

CCL19 Antibody - Additional Information

Dilution	WB~~1:1000 FC~~1:10~50
Purification	Affinity-chromatography
Immunogen	A synthesized peptide derived from human CCL19
Description	May play a role not only in inflammatory and immunological responses but also in normal lymphocyte recirculation and homing. May play an important role in trafficking of T-cells in thymus, and T-cell and B-cell migration to secondary lymphoid organs.
Storage Condition and Buffer	Rabbit IgG in phosphate buffered saline , pH 7.4, 150mM NaCl, 0.02% sodium azide and 50% glycerol. Store at +4°C short term. Store at -20°C long term. Avoid freeze / thaw cycle.

CCL19 Antibody - Protein Information**Name** CCL19**Synonyms** ELC, MIP3B, SCYA19**Function**

May play a role not only in inflammatory and immunological responses but also in normal lymphocyte recirculation and homing. May play an important role in trafficking of T-cells in thymus, and T-cell and B-cell migration to secondary lymphoid organs. Binds to chemokine receptor CCR7. Recombinant CCL19 shows potent chemotactic activity for T-cells and B-cells but not for granulocytes and monocytes. Binds to atypical chemokine receptor ACKR4 and mediates the recruitment of beta- arrestin (ARRB1/2) to ACKR4.

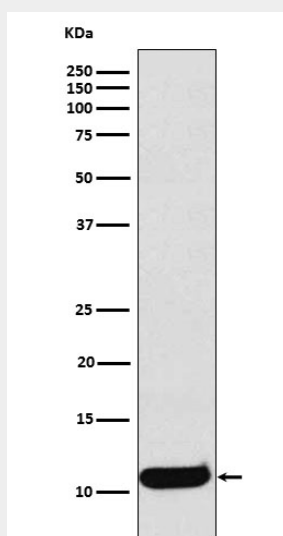
Cellular Location
Secreted.**Tissue Location**

Expressed at high levels in the lymph nodes, thymus and appendix. Intermediate levels seen in colon and trachea, while low levels found in spleen, small intestine, lung, kidney and stomach

CCL19 Antibody - Protocols

Provided below are standard protocols that you may find useful for product applications.

- [Western Blot](#)
- [Blocking Peptides](#)
- [Dot Blot](#)
- [Immunohistochemistry](#)
- [Immunofluorescence](#)
- [Immunoprecipitation](#)
- [Flow Cytometry](#)
- [Cell Culture](#)

CCL19 Antibody - Images

Western blot analysis of CCL19 expression in Human Macrophage Inflammatory Protein 3 beta recombinant protein lysate.