

HLTF Antibody
Rabbit mAb
Catalog # AP92309**Specification**

HLTF Antibody - Product Information

Application	WB, IHC, ICC
Primary Accession	Q14527
Reactivity	Rat
Clonality	Monoclonal
Other Names	
HIP116; HIP116A; HLTF 1; Hltf; HLTF1; p113; RNF80; SMARC A3; SMARCA 3; SMARCA3; SNF2L3; ZBU1;	
Isotype	Rabbit IgG
Host	Rabbit
Calculated MW	113929 Da

HLTF Antibody - Additional Information

Dilution	WB~~1:1000 IHC~~1:100~500 ICC~~N/A
Purification	Affinity-chromatography
Immunogen	A synthesized peptide derived from human HLTF
Description	Has both helicase and E3 ubiquitin ligase activities. Possesses intrinsic ATP-dependent nucleosome-remodeling activity; This activity may be required for transcriptional activation or repression of specific target promoters (By similarity). Rabbit IgG in phosphate buffered saline , pH 7.4, 150mM NaCl, 0.02% sodium azide and 50% glycerol. Store at +4°C short term. Store at -20°C long term. Avoid freeze / thaw cycle.
Storage Condition and Buffer	

HLTF Antibody - Protein Information**Name** HLTF**Synonyms** HIP116A, RNF80, SMARCA3, SNF2L3, ZBU1**Function**

Has both helicase and E3 ubiquitin ligase activities. Possesses intrinsic ATP-dependent nucleosome-remodeling activity; This activity may be required for transcriptional activation or repression of specific target promoters (By similarity). These may include the SERPINE1 and HIV-1 promoters and the SV40 enhancer, to which this protein can bind directly. Plays a role in error-free

postreplication repair (PRR) of damaged DNA and maintains genomic stability through acting as a ubiquitin ligase for 'Lys-63'-linked polyubiquitination of chromatin-bound PCNA.

Cellular Location

Cytoplasm. Nucleus. Nucleus, nucleolus Nucleus, nucleoplasm. Note=Nuclear localization is stimulated by progesterone.

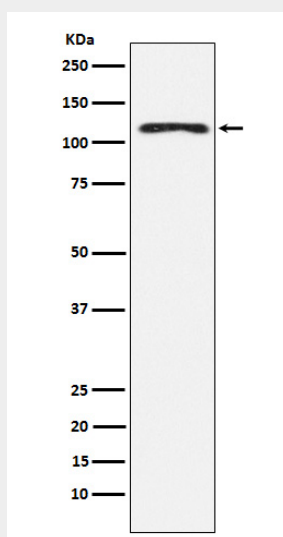
Tissue Location

Expressed in brain, heart, kidney, liver, lung, pancreas, placenta and skeletal muscle.

HLTF Antibody - Protocols

Provided below are standard protocols that you may find useful for product applications.

- [Western Blot](#)
- [Blocking Peptides](#)
- [Dot Blot](#)
- [Immunohistochemistry](#)
- [Immunofluorescence](#)
- [Immunoprecipitation](#)
- [Flow Cytometry](#)
- [Cell Culture](#)

HLTF Antibody - Images

Western blot analysis of HLTF expression in K562 cell lysate.