

DCI Antibody (C-term)
Affinity Purified Rabbit Polyclonal Antibody (Pab)
Catalog # AP9230b**Specification**

DCI Antibody (C-term) - Product Information

Application	WB,E
Primary Accession	P42126
Reactivity	Human
Host	Rabbit
Clonality	Polyclonal
Isotype	Rabbit IgG
Calculated MW	32816

DCI Antibody (C-term) - Additional Information**Gene ID** 1632**Other Names**

Enoyl-CoA delta isomerase 1, mitochondrial, 2-trans-enoyl-CoA isomerase, Delta(3),
Delta(2)-enoyl-CoA isomerase, D3, D2-enoyl-CoA isomerase, Dodecenoyl-CoA isomerase, ECI1, DCI

Target/Specificity

This DCI antibody is generated from rabbits immunized with a KLH conjugated synthetic peptide selected from the C-terminal region of human DCI.

Dilution

WB~~1:1000

E~~Use at an assay dependent concentration.

Format

Purified polyclonal antibody supplied in PBS with 0.09% (W/V) sodium azide. This antibody is purified through a protein A column, followed by peptide affinity purification.

Storage

Maintain refrigerated at 2-8°C for up to 2 weeks. For long term storage store at -20°C in small aliquots to prevent freeze-thaw cycles.

Precautions

DCI Antibody (C-term) is for research use only and not for use in diagnostic or therapeutic procedures.

DCI Antibody (C-term) - Protein Information**Name** ECI1**Synonyms** DCI

Function Key enzyme of fatty acid beta-oxidation (Probable). Able to isomerize both 3-cis (3Z) and 3-trans (3E) double bonds into the 2- trans (2E) form in a range of enoyl-CoA species, with a preference for (3Z)-enoyl-CoAs over (3E)-enoyl-CoAs (By similarity) (PubMed:[7818490](#)). The catalytic efficiency of this enzyme is not affected by the fatty acyl chain length (By similarity).

Cellular Location

Mitochondrion matrix {ECO:0000250|UniProtKB:P23965}

Tissue Location

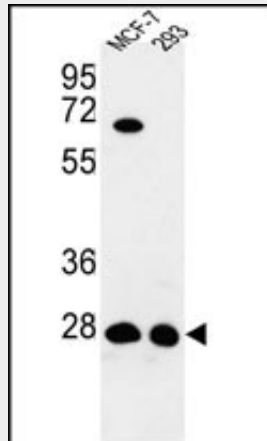
Expressed in liver (at protein level).

DCI Antibody (C-term) - Protocols

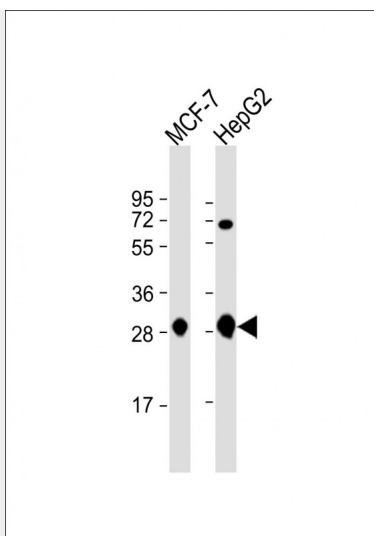
Provided below are standard protocols that you may find useful for product applications.

- [Western Blot](#)
- [Blocking Peptides](#)
- [Dot Blot](#)
- [Immunohistochemistry](#)
- [Immunofluorescence](#)
- [Immunoprecipitation](#)
- [Flow Cytometry](#)
- [Cell Culture](#)

DCI Antibody (C-term) - Images



Western blot analysis of DCI Antibody (C-term) (Cat. #AP9230b) in MCF-7, 293 cell line lysates (35ug/lane). DCI (arrow) was detected using the purified Pab.



All lanes : Anti-DCI Antibody (C-term) at 1:1000 dilution Lane 1: MCF-7 whole cell lysate Lane 2: HepG2 whole cell lysate Lysates/proteins at 20 µg per lane. Secondary Goat Anti-Rabbit IgG, (H+L), Peroxidase conjugated at 1/10000 dilution. Predicted band size : 33 kDa Blocking/Dilution buffer: 5% NFDM/TBST.

DCI Antibody (C-term) - Background

DCI encodes a member of the hydratase/isomerase superfamily. The protein encoded is a key mitochondrial enzyme involved in beta-oxidation of unsaturated fatty acids. It catalyzes the transformation of 3-cis and 3-trans-enoyl-CoA esters arising during the stepwise degradation of cis-, mono-, and polyunsaturated fatty acids to the 2-trans-enoyl-CoA intermediates.

DCI Antibody (C-term) - References

Partanen,S.T., et.al., J. Mol. Biol. 342 (4), 1197-1208 (2004)
Wistow,G., et.al, Mol. Vis. 8, 171-184 (2002)