

CAPG Antibody
Rabbit mAb
Catalog # AP92312**Specification**

CAPG Antibody - Product Information

Application	WB
Primary Accession	P40121
Reactivity	Rat
Clonality	Monoclonal
Other Names	
AFCP; Capg; gCap39; HEL S 66; mbh1; MCP;	
Isotype	Rabbit IgG
Host	Rabbit
Calculated MW	38499 Da

CAPG Antibody - Additional Information

Dilution	WB~~1:1000
Purification	Affinity-chromatography
Immunogen	A synthesized peptide derived from human CAPG
Description	Calcium-sensitive protein which reversibly blocks the barbed ends of actin filaments but does not sever preformed actin filaments. May play an important role in macrophage function.
Storage Condition and Buffer	Rabbit IgG in phosphate buffered saline , pH 7.4, 150mM NaCl, 0.02% sodium azide and 50% glycerol. Store at +4°C short term. Store at -20°C long term. Avoid freeze / thaw cycle.

CAPG Antibody - Protein Information**Name** CAPG**Synonyms** AFCP, MCP**Function**

Calcium-sensitive protein which reversibly blocks the barbed ends of actin filaments but does not sever preformed actin filaments. May play an important role in macrophage function. May play a role in regulating cytoplasmic and/or nuclear structures through potential interactions with actin. May bind DNA.

Cellular Location

Nucleus. Cytoplasm Melanosome. Cell projection, lamellipodium {ECO:0000250|UniProtKB:P24452}. Cell projection, ruffle {ECO:0000250|UniProtKB:P24452}.

Note=In macrophages, may be predominantly cytoplasmic. Nuclear localization was observed in fibroblasts. In macrophages, present at the membrane-cytoplasm interface. In activated macrophages, concentrated in the ruffles of the leading lamellipodia.
{ECO:0000250|UniProtKB:P24452}

Tissue Location

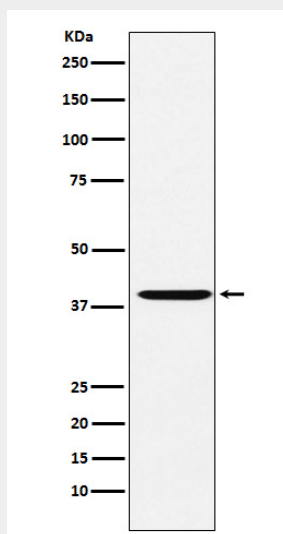
Macrophages and macrophage-like cells.

CAPG Antibody - Protocols

Provided below are standard protocols that you may find useful for product applications.

- [Western Blot](#)
- [Blocking Peptides](#)
- [Dot Blot](#)
- [Immunohistochemistry](#)
- [Immunofluorescence](#)
- [Immunoprecipitation](#)
- [Flow Cytometry](#)
- [Cell Culture](#)

CAPG Antibody - Images



Western blot analysis of CAPG expression in HeLa cell lysate.