

**IDH1 Antibody**  
**Rabbit mAb**  
**Catalog # AP92314****Specification**

---

**IDH1 Antibody - Product Information**

Application	WB, IHC, IP
Primary Accession	<a href="#">O75874</a>
Reactivity	Rat
Clonality	Monoclonal

**Other Names**

HEL-216; HEL-S-26; ICDH; IDCD; IDH; IDH1; IDP; IDPC; PICD;

Isotype	Rabbit IgG
Host	Rabbit
Calculated MW	46659 Da

**IDH1 Antibody - Additional Information**

Dilution	WB~~1:1000 IHC~~1:100~500 IP~~N/A
Purification	Affinity-chromatography
Immunogen	A synthesized peptide derived from human IDH1
Description	Genetic variations are associated with cartilaginous tumors such as enchondroma or chondrosarcoma. Mutations of Arg-132 to Cys, Gly or His abolish the conversion of isocitrate to alpha-ketoglutarate. Instead, alpha-ketoglutarate is converted to R(-)-2-hydroxyglutarate.
Storage Condition and Buffer	Rabbit IgG in phosphate buffered saline , pH 7.4, 150mM NaCl, 0.02% sodium azide and 50% glycerol. Store at +4°C short term. Store at -20°C long term. Avoid freeze / thaw cycle.

**IDH1 Antibody - Protein Information****Name** IDH1**Synonyms** PICD**Function**

Catalyzes the NADP(+)-dependent oxidative decarboxylation of isocitrate (D-threo-isocitrate) to 2-ketoglutarate (2-oxoglutarate), which is required by other enzymes such as the phytanoyl-CoA dioxygenase (PubMed:<a href="http://www.uniprot.org/citations/10521434" target="\_blank">10521434</a>, PubMed:<a href="http://www.uniprot.org/citations/19935646"

target="\_blank">19935646</a>). Plays a critical role in the generation of NADPH, an important cofactor in many biosynthesis pathways (PubMed:<a href="http://www.uniprot.org/citations/10521434" target="\_blank">10521434</a>). May act as a corneal epithelial crystallin and may be involved in maintaining corneal epithelial transparency (By similarity).

#### **Cellular Location**

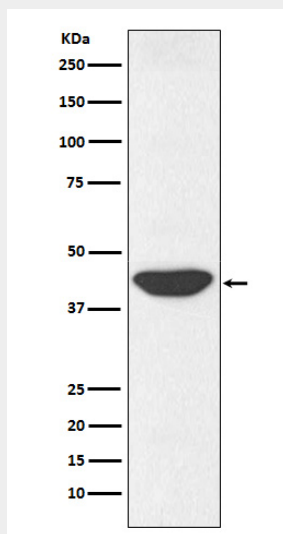
Cytoplasm, cytosol. Peroxisome

#### **IDH1 Antibody - Protocols**

Provided below are standard protocols that you may find useful for product applications.

- [Western Blot](#)
- [Blocking Peptides](#)
- [Dot Blot](#)
- [Immunohistochemistry](#)
- [Immunofluorescence](#)
- [Immunoprecipitation](#)
- [Flow Cytometry](#)
- [Cell Culture](#)

#### **IDH1 Antibody - Images**



Western blot analysis of IDH1 expression in HepG2 cell lysate.