

NAP1L1 Antibody
Rabbit mAb
Catalog # AP92321**Specification**

NAP1L1 Antibody - Product Information

Application	WB, FC
Primary Accession	P55209
Reactivity	Rat
Clonality	Monoclonal
Other Names	
NRP; NAP1; NAP1L;	
Isotype	Rabbit IgG
Host	Rabbit
Calculated MW	45374 Da

NAP1L1 Antibody - Additional Information

Dilution	WB~~1:1000 FC~~1:10~50
Purification	Affinity-chromatography
Immunogen	A synthesized peptide derived from human NAP1L1
Description	May be involved in modulating chromatin formation and contribute to regulation of cell proliferation.
Storage Condition and Buffer	Rabbit IgG in phosphate buffered saline , pH 7.4, 150mM NaCl, 0.02% sodium azide and 50% glycerol. Store at +4°C short term. Store at -20°C long term. Avoid freeze / thaw cycle.

NAP1L1 Antibody - Protein Information**Name** NAP1L1**Synonyms** NRP**Function**

Histone chaperone that plays a role in the nuclear import of H2A-H2B and nucleosome assembly (PubMed: [20002496](http://www.uniprot.org/citations/20002496), PubMed: [21211722](http://www.uniprot.org/citations/21211722), PubMed: [26841755](http://www.uniprot.org/citations/26841755)). Also participates in several important DNA repair mechanisms: greatly enhances ERCC6-mediated chromatin remodeling which is essential for transcription-coupled nucleotide excision DNA repair (PubMed: [28369616](http://www.uniprot.org/citations/28369616)). Also stimulates homologous recombination (HR) by RAD51 and RAD54 which is essential in mitotic DNA double strand break (DSB) repair (PubMed: [28369616](#)).

<http://www.uniprot.org/citations/24798879>). Plays a key role in the regulation of embryonic neurogenesis (By similarity). Promotes the proliferation of neural progenitors and inhibits neuronal differentiation during cortical development (By similarity). Regulates neurogenesis via the modulation of RASSF10; regulates RASSF10 expression by promoting SETD1A-mediated H3K4 methylation at the RASSF10 promoter (By similarity).

Cellular Location

Nucleus. Melanosome. Cytoplasm. Note=Identified by mass spectrometry in melanosome fractions from stage I to stage IV

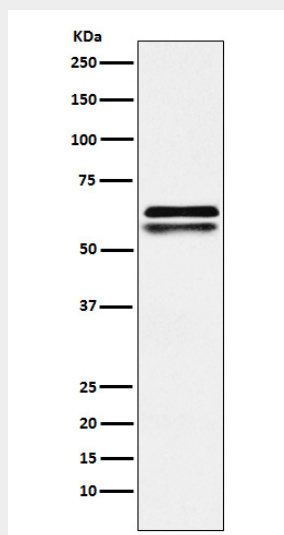
Tissue Location

Ubiquitously expressed.

NAP1L1 Antibody - Protocols

Provided below are standard protocols that you may find useful for product applications.

- [Western Blot](#)
- [Blocking Peptides](#)
- [Dot Blot](#)
- [Immunohistochemistry](#)
- [Immunofluorescence](#)
- [Immunoprecipitation](#)
- [Flow Cytometry](#)
- [Cell Culture](#)

NAP1L1 Antibody - Images

Western blot analysis of NAP1L1 expression in Jurkat cell lysate.