

**CRMP5 Antibody**  
Rabbit mAb  
Catalog # AP92324

## Specification

---

### CRMP5 Antibody - Product Information

Application	WB, IHC, IP
Primary Accession	<a href="#">O9BPU6</a>
Reactivity	Rat
Clonality	Monoclonal
<b>Other Names</b>	
CRAM; DPYSL5; DRP5; Ulip6;	
Isotype	Rabbit IgG
Host	Rabbit
Calculated MW	61421 Da

### CRMP5 Antibody - Additional Information

Purification	Affinity-chromatography
Immunogen	A synthesized peptide derived from human CRMP5
Description	May have a function in neuronal differentiation and/or axon growth.
Storage Condition and Buffer	Rabbit IgG in phosphate buffered saline , pH 7.4, 150mM NaCl, 0.02% sodium azide and 50% glycerol. Store at +4°C short term. Store at -20°C long term. Avoid freeze / thaw cycle.

### CRMP5 Antibody - Protein Information

**Name** DPYSL5

**Synonyms** CRMP5, ULIP6

#### Function

Involved in the negative regulation of dendrite outgrowth.

#### Cellular Location

Cytoplasm.

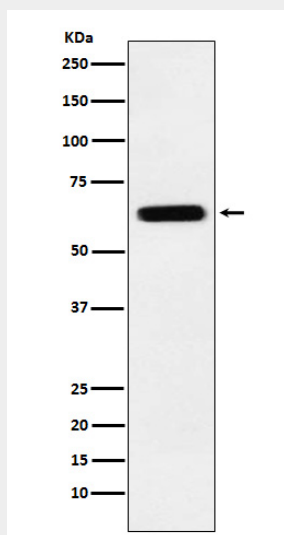
### CRMP5 Antibody - Protocols

Provided below are standard protocols that you may find useful for product applications.

- [Western Blot](#)

- [Blocking Peptides](#)
- [Dot Blot](#)
- [Immunohistochemistry](#)
- [Immunofluorescence](#)
- [Immunoprecipitation](#)
- [Flow Cytometry](#)
- [Cell Culture](#)

### CRMP5 Antibody - Images



Western blot analysis of CRMP5 expression in SH-SY5Y cell lysate.