

ATP1B1 Antibody
Rabbit mAb
Catalog # AP92325**Specification**

ATP1B1 Antibody - Product Information

Application	WB, IHC
Primary Accession	P05026
Reactivity	Rat
Clonality	Monoclonal
Other Names	
Adenosinetriphosphatase; ATP1B; ATP1B1; Atpb 1; ATPBS;	
Isotype	Rabbit IgG
Host	Rabbit
Calculated MW	35061 Da

ATP1B1 Antibody - Additional Information

Dilution	WB~~1:1000 IHC~~1:100~500
Purification	Affinity-chromatography
Immunogen	A synthesized peptide derived from human ATP1B1
Description	This is the non-catalytic component of the active enzyme, which catalyzes the hydrolysis of ATP coupled with the exchange of Na(+) and K(+) ions across the plasma membrane. The beta subunit regulates, through assembly of alpha/beta heterodimers, the number of sodium pumps transported to the plasma membrane.
Storage Condition and Buffer	Rabbit IgG in phosphate buffered saline , pH 7.4, 150mM NaCl, 0.02% sodium azide and 50% glycerol. Store at +4°C short term. Store at -20°C long term. Avoid freeze / thaw cycle.

ATP1B1 Antibody - Protein Information**Name** ATP1B1**Synonyms** ATP1B**Function**

This is the non-catalytic component of the active enzyme, which catalyzes the hydrolysis of ATP coupled with the exchange of Na(+) and K(+) ions across the plasma membrane. The beta subunit regulates, through assembly of alpha/beta heterodimers, the number of sodium pumps

transported to the plasma membrane (PubMed:19694409). Plays a role in innate immunity by enhancing virus-triggered induction of interferons (IFNs) and interferon stimulated genes (ISGs). Mechanistically, enhances the ubiquitination of TRAF3 and TRAF6 as well as the phosphorylation of TAK1 and TBK1 (PubMed:34011520).

Cellular Location

Cell membrane; Single-pass type II membrane protein. Apical cell membrane {ECO:0000250|UniProtKB:P07340}; Single-pass type II membrane protein. Cell membrane, sarcolemma {ECO:0000250|UniProtKB:P14094}. Note=Colocalizes with OBSCN at the intercalated disk and sarcolemma in cardiomyocytes. Localizes in long striations at the level of Z and M lines {ECO:0000250|UniProtKB:P14094}

Tissue Location

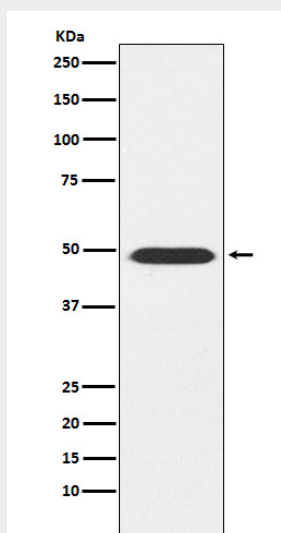
Found in most tissues.

ATP1B1 Antibody - Protocols

Provided below are standard protocols that you may find useful for product applications.

- [Western Blot](#)
- [Blocking Peptides](#)
- [Dot Blot](#)
- [Immunohistochemistry](#)
- [Immunofluorescence](#)
- [Immunoprecipitation](#)
- [Flow Cytometry](#)
- [Cell Culture](#)

ATP1B1 Antibody - Images



Western blot analysis of ATP1B1 expression in Mouse brain lysate.