

TXNRD2 Antibody
Rabbit mAb
Catalog # AP92327**Specification**

TXNRD2 Antibody - Product Information

Application	WB, IHC
Primary Accession	Q9NNW7
Reactivity	Rat
Clonality	Monoclonal
Other Names	
SelZ; TR 3; TR; TR beta; TR3; TRXR2; TXNRD 2; Txnrd2;	
Isotype	Rabbit IgG
Host	Rabbit
Calculated MW	56507 Da

TXNRD2 Antibody - Additional Information

Dilution	WB~~1:1000 IHC~~1:100~500
Purification	Affinity-chromatography
Immunogen	A synthesized peptide derived from human TXNRD2
Description	Maintains thioredoxin in a reduced state. Implicated in the defenses against oxidative stress. May play a role in redox-regulated cell signaling.
Storage Condition and Buffer	Rabbit IgG in phosphate buffered saline , pH 7.4, 150mM NaCl, 0.02% sodium azide and 50% glycerol. Store at +4°C short term. Store at -20°C long term. Avoid freeze / thaw cycle.

TXNRD2 Antibody - Protein Information**Name** TXNRD2 ([HGNC:18155](#))**Synonyms** KIAA1652, TRXR2**Function**

Involved in the control of reactive oxygen species levels and the regulation of mitochondrial redox homeostasis (PubMed:24601690). Maintains thioredoxin in a reduced state. May play a role in redox- regulated cell signaling.

Cellular Location

Mitochondrion.

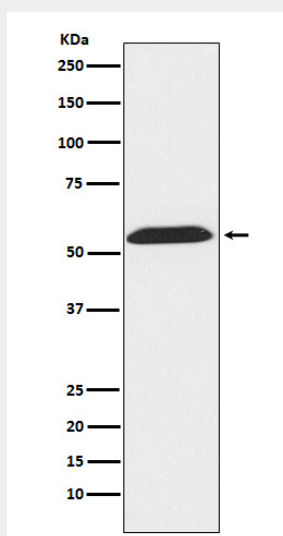
Tissue Location

Highly expressed in the prostate, ovary, liver, testis, uterus, colon and small intestine. Intermediate levels in brain, skeletal muscle, heart and spleen. Low levels in placenta, pancreas, thymus and peripheral blood leukocytes. According to PubMed:10608886, high levels in kidney, whereas according to PubMed:9923614, levels are low. High expression is observed in the adrenal cortex (PubMed:24601690).

TXNRD2 Antibody - Protocols

Provided below are standard protocols that you may find useful for product applications.

- [Western Blot](#)
- [Blocking Peptides](#)
- [Dot Blot](#)
- [Immunohistochemistry](#)
- [Immunofluorescence](#)
- [Immunoprecipitation](#)
- [Flow Cytometry](#)
- [Cell Culture](#)

TXNRD2 Antibody - Images

Western blot analysis of TXNRD2 expression in LnCap cell lysate.