

**PAF1 Antibody**  
**Rabbit mAb**  
**Catalog # AP92329****Specification**

---

**PAF1 Antibody - Product Information**

Application	WB
Primary Accession	<a href="#">Q8N7H5</a>
Reactivity	Rat
Clonality	Monoclonal
<b>Other Names</b>	
hPAF1; PAF1; PD2;	
Isotype	Rabbit IgG
Host	Rabbit
Calculated MW	59976 Da

**PAF1 Antibody - Additional Information**

Dilution	WB~~1:1000
Purification	Affinity-chromatography
Immunogen	A synthesized peptide derived from human PAF1
Description	The mammalian PAF1 complex is a multifunctional complex. The PAF1 complex interacts with RNA polymerase II and may be involved in both initiation and elongation, and in histone methylation and RNA processing. Has oncogenic activity in vivo and in vitro.
Storage Condition and Buffer	Rabbit IgG in phosphate buffered saline , pH 7.4, 150mM NaCl, 0.02% sodium azide and 50% glycerol. Store at +4°C short term. Store at -20°C long term. Avoid freeze / thaw cycle.

**PAF1 Antibody - Protein Information****Name** PAF1**Synonyms** PD2**Function**

Component of the PAF1 complex (PAF1C) which has multiple functions during transcription by RNA polymerase II and is implicated in regulation of development and maintenance of embryonic stem cell pluripotency. PAF1C associates with RNA polymerase II through interaction with POLR2A CTD non-phosphorylated and 'Ser-2'- and 'Ser- 5'-phosphorylated forms and is involved in transcriptional elongation, acting both independently and synergistically with TCEA1 and in cooperation with the DSIF complex and HTATSF1. PAF1C is required for transcription of Hox and

Wnt target genes. PAF1C is involved in hematopoiesis and stimulates transcriptional activity of KMT2A/MLL1; it promotes leukemogenesis through association with KMT2A/MLL1-rearranged oncoproteins, such as KMT2A/MLL1-MLLT3/AF9 and KMT2A/MLL1-MLLT1/ENL. PAF1C is involved in histone modifications such as ubiquitination of histone H2B and methylation on histone H3 'Lys-4' (H3K4me3). PAF1C recruits the RNF20/40 E3 ubiquitin-protein ligase complex and the E2 enzyme UBE2A or UBE2B to chromatin which mediate monoubiquitination of 'Lys-120' of histone H2B (H2BK120ub1); UB2A/B-mediated H2B ubiquitination is proposed to be coupled to transcription. PAF1C is involved in mRNA 3' end formation probably through association with cleavage and poly(A) factors. In case of infection by influenza A strain H3N2, PAF1C associates with viral NS1 protein, thereby regulating gene transcription. Connects PAF1C with the RNF20/40 E3 ubiquitin-protein ligase complex. Involved in polyadenylation of mRNA precursors. Has oncogenic activity in vivo and in vitro.

### Cellular Location

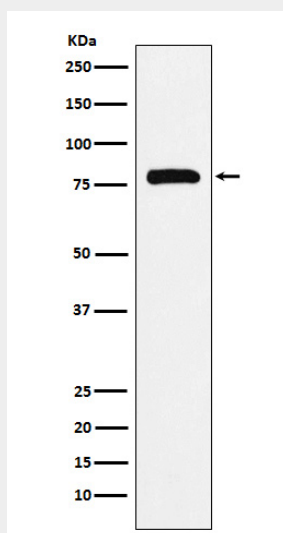
Nucleus. Note=Punctuate distribution throughout the nucleus except in nucleoli and the perinuclear chromatin

### PAF1 Antibody - Protocols

Provided below are standard protocols that you may find useful for product applications.

- [Western Blot](#)
- [Blocking Peptides](#)
- [Dot Blot](#)
- [Immunohistochemistry](#)
- [Immunofluorescence](#)
- [Immunoprecipitation](#)
- [Flow Cytometry](#)
- [Cell Culture](#)

### PAF1 Antibody - Images



Western blot analysis of PAF1 expression in K562 cell lysate.