

PRKRA Antibody
Rabbit mAb
Catalog # AP92336**Specification**

PRKRA Antibody - Product Information

Application	WB, IHC
Primary Accession	075569
Reactivity	Rat
Clonality	Monoclonal
Other Names	
RAX; PACT; DYT16; HSD14;	
Isotype	Rabbit IgG
Host	Rabbit
Calculated MW	34404 Da

PRKRA Antibody - Additional Information

Dilution	WB~~1:1000 IHC~~1:100~500
Purification	Affinity-chromatography
Immunogen	A synthesized peptide derived from human PRKRA
Description	Activates EIF2AK2/PKR in the absence of double stranded RNA (dsRNA), leading to phosphorylation of EIF2S1/EIF2-alpha and inhibition of translation and induction of apoptosis.
Storage Condition and Buffer	Rabbit IgG in phosphate buffered saline , pH 7.4, 150mM NaCl, 0.02% sodium azide and 50% glycerol. Store at +4°C short term. Store at -20°C long term. Avoid freeze / thaw cycle.

PRKRA Antibody - Protein Information**Name** PRKRA**Synonyms** PACT, RAX**Function**

Activates EIF2AK2/PKR in the absence of double-stranded RNA (dsRNA), leading to phosphorylation of EIF2S1/EIF2-alpha and inhibition of translation and induction of apoptosis. Required for siRNA production by DICER1 and for subsequent siRNA-mediated post- transcriptional gene silencing. Does not seem to be required for processing of pre-miRNA to miRNA by DICER1. Promotes UBC9-p53/TP53 association and sumoylation and phosphorylation of p53/TP53 at 'Lys- 386' at 'Ser-392' respectively and enhances its activity in a EIF2AK2/PKR-dependent manner (By similarity).

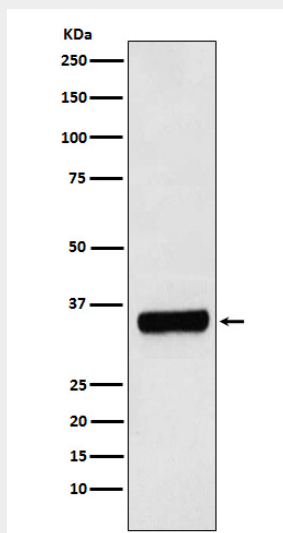
Cellular Location

Cytoplasm, perinuclear region. Cytoplasm.

PRKRA Antibody - Protocols

Provided below are standard protocols that you may find useful for product applications.

- [Western Blot](#)
- [Blocking Peptides](#)
- [Dot Blot](#)
- [Immunohistochemistry](#)
- [Immunofluorescence](#)
- [Immunoprecipitation](#)
- [Flow Cytometry](#)
- [Cell Culture](#)

PRKRA Antibody - Images

Western blot analysis of PRKRA expression in HepG2 cell lysate.