

ICOS Antibody
Rabbit mAb
Catalog # AP92346**Specification**

ICOS Antibody - Product Information

Application	WB, FC, ICC
Primary Accession	O9Y6W8
Reactivity	Rat
Clonality	Monoclonal
Other Names	
AILIM; CD278; CRP1; CVID1; ICOS;	

Isotype	Rabbit IgG
Host	Rabbit
Calculated MW	22625 Da

ICOS Antibody - Additional Information

Dilution	WB~~1:1000 FC~~1:10~50 ICC~~N/A
Purification	Affinity-chromatography
Immunogen	A synthesized peptide derived from human ICOS
Description	Enhances all basic T-cell responses to a foreign antigen, namely proliferation, secretion of lymphokines, up-regulation of molecules that mediate cell-cell interaction, and effective help for antibody secretion by B-cells.
Storage Condition and Buffer	Rabbit IgG in phosphate buffered saline , pH 7.4, 150mM NaCl, 0.02% sodium azide and 50% glycerol. Store at +4°C short term. Store at -20°C long term. Avoid freeze / thaw cycle.

ICOS Antibody - Protein Information**Name** ICOS**Synonyms** AILIM**Function**

Stimulatory receptor expressed in activated or antigen- experienced T-cells that plays an important role in the immune response (PubMed:9930702). Upon binding to its ligand ICOSL expressed on antigen presenting cells (APCs), delivers costimulatory signals that enhances all basic T-cell responses to a foreign antigen, namely proliferation, secretion of

lymphokines including IL10, up-regulation of molecules that mediate cell-cell interaction, and effective help for antibody secretion by B-cells (PubMed:33033255). Also acts as a costimulatory receptor critical for the differentiation of T follicular regulatory cells upon immune challenges such as viral infection (PubMed:27135603). Mechanistically, potentiates TCR-induced calcium flux by augmenting PLCG1 activation and actin remodeling (By similarity). In addition, activates PI3K signaling pathways independently of calcium flux (PubMed:30523347). Essential both for efficient interaction between T and B-cells and for normal antibody responses to T-cell dependent antigens. Prevents the apoptosis of pre-activated T-cells. Plays a critical role in CD40-mediated class switching of immunoglobulin isotypes (By similarity).

Cellular Location

[Isoform 1]: Cell membrane; Single-pass type I membrane protein

Tissue Location

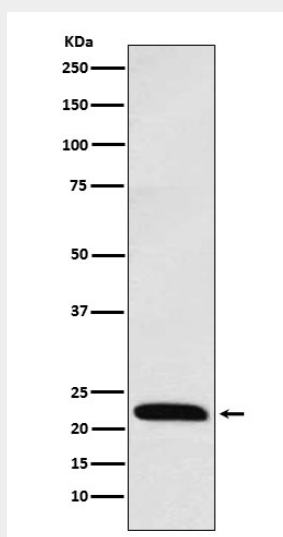
Activated T-cells. Highly expressed on tonsillar T- cells, which are closely associated with B-cells in the apical light zone of germinal centers, the site of terminal B-cell maturation Expressed at lower levels in thymus, lung, lymph node and peripheral blood leukocytes. Expressed in the medulla of fetal and newborn thymus

ICOS Antibody - Protocols

Provided below are standard protocols that you may find useful for product applications.

- [Western Blot](#)
- [Blocking Peptides](#)
- [Dot Blot](#)
- [Immunohistochemistry](#)
- [Immunofluorescence](#)
- [Immunoprecipitation](#)
- [Flow Cytometry](#)
- [Cell Culture](#)

ICOS Antibody - Images



Western blot analysis of ICOS expression in Jurkat cell lysate.