

Fibrinogen alpha chain Antibody
Rabbit mAb
Catalog # AP92351**Specification**

Fibrinogen alpha chain Antibody - Product Information

Application	WB, IHC, FC, ICC, IP
Primary Accession	P02671
Reactivity	Rat
Clonality	Monoclonal
Other Names	
Fba5e; FGA; Fib; Fib2; Fibrinopeptide A;	
Isotype	Rabbit IgG
Host	Rabbit
Calculated MW	94973 Da

Fibrinogen alpha chain Antibody - Additional Information

Dilution	WB~~1:1000 IHC~~1:100~500 FC~~1:10~50 ICC~~N/A IP~~N/A
Purification	Affinity-chromatography
Immunogen	A synthesized peptide derived from human Fibrinogen alpha chain
Description	Fibrinogen has a double function: yielding monomers that polymerize into fibrin and acting as a cofactor in platelet aggregation.
Storage Condition and Buffer	Rabbit IgG in phosphate buffered saline , pH 7.4, 150mM NaCl, 0.02% sodium azide and 50% glycerol. Store at +4°C short term. Store at -20°C long term. Avoid freeze / thaw cycle.

Fibrinogen alpha chain Antibody - Protein Information**Name** FGA**Function**

Cleaved by the protease thrombin to yield monomers which, together with fibrinogen beta (FGB) and fibrinogen gamma (FGG), polymerize to form an insoluble fibrin matrix. Fibrin has a major function in hemostasis as one of the primary components of blood clots. In addition, functions during the early stages of wound repair to stabilize the lesion and guide cell migration during re-epithelialization. Was originally thought to be essential for platelet aggregation, based on in vitro studies using anticoagulated blood. However, subsequent studies have shown that it is not absolutely required for thrombus formation in vivo. Enhances expression of SELP in activated

platelets via an ITGB3-dependent pathway. Maternal fibrinogen is essential for successful pregnancy. Fibrin deposition is also associated with infection, where it protects against IFNG-mediated hemorrhage. May also facilitate the immune response via both innate and T-cell mediated pathways.

Cellular Location

Secreted

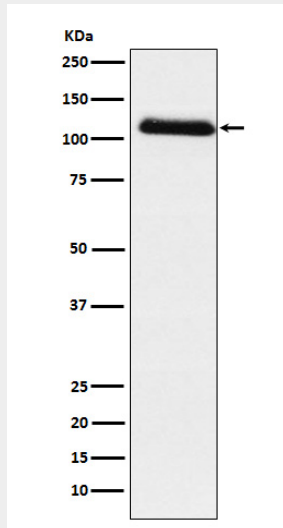
Tissue Location

Detected in blood plasma (at protein level).

Fibrinogen alpha chain Antibody - Protocols

Provided below are standard protocols that you may find useful for product applications.

- [Western Blot](#)
- [Blocking Peptides](#)
- [Dot Blot](#)
- [Immunohistochemistry](#)
- [Immunofluorescence](#)
- [Immunoprecipitation](#)
- [Flow Cytometry](#)
- [Cell Culture](#)

Fibrinogen alpha chain Antibody - Images

Western blot analysis of Fibrinogen alpha chain expression in Human plasma lysate.