

BHMT Antibody
Rabbit mAb
Catalog # AP92354**Specification**

BHMT Antibody - Product Information

| | |
|-------------------------|------------------------|
| Application | WB, IHC, IP |
| Primary Accession | Q93088 |
| Clonality | Monoclonal |
| Other Names | |
| BHMT; BHMT1; HEL S 61p; | |
| Isotype | Rabbit IgG |
| Host | Rabbit |
| Calculated MW | 44998 Da |

BHMT Antibody - Additional Information

| | |
|------------------------------|---|
| Purification | Affinity-chromatography |
| Immunogen | A synthesized peptide derived from human BHMT |
| Description | Involved in the regulation of homocysteine metabolism. Converts betaine and homocysteine to dimethylglycine and methionine, respectively. This reaction is also required for the irreversible oxidation of choline. |
| Storage Condition and Buffer | Rabbit IgG in phosphate buffered saline , pH 7.4, 150mM NaCl, 0.02% sodium azide and 50% glycerol. Store at +4°C short term. Store at -20°C long term. Avoid freeze / thaw cycle. |

BHMT Antibody - Protein Information**Name** BHMT {ECO:0000303|PubMed:8798461}**Function**

Involved in the regulation of homocysteine metabolism. Converts betaine and homocysteine to dimethylglycine and methionine, respectively. This reaction is also required for the irreversible oxidation of choline.

Cellular Location

Cytoplasm, cytosol {ECO:0000250|UniProtKB:O09171}. Nucleus {ECO:0000250|UniProtKB:O09171} Note=Predominantly localized in the cytoplasm with a small fraction detected in the nucleus. Translocates into the nucleus upon oxidative stress. {ECO:0000250|UniProtKB:O09171}

Tissue Location

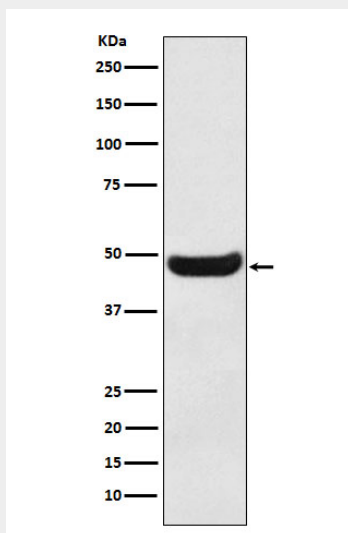
Found exclusively in liver and kidney.

BHMT Antibody - Protocols

Provided below are standard protocols that you may find useful for product applications.

- [Western Blot](#)
- [Blocking Peptides](#)
- [Dot Blot](#)
- [Immunohistochemistry](#)
- [Immunofluorescence](#)
- [Immunoprecipitation](#)
- [Flow Cytometry](#)
- [Cell Culture](#)

BHMT Antibody - Images



Western blot analysis of BHMT expression in Human fetal kidney lysate.