

BCAR1 Antibody
Rabbit mAb
Catalog # AP92360**Specification**

BCAR1 Antibody - Product Information

Application	WB
Primary Accession	P56945
Reactivity	Rat
Clonality	Monoclonal
Other Names	
BCAR 1; CAS; CAS1; Cass1; CRKAS; p130cas;	
Isotype	Rabbit IgG
Host	Rabbit
Calculated MW	93372 Da

BCAR1 Antibody - Additional Information

Dilution	WB~~1:1000
Purification	Affinity-chromatography
Immunogen	A synthesized peptide derived from human BCAR1
Description	Docking protein which plays a central coordinating role for tyrosine kinase-based signaling related to cell adhesion. Implicated in induction of cell migration. Overexpression confers antiestrogen resistance on breast cancer cells.
Storage Condition and Buffer	Rabbit IgG in phosphate buffered saline , pH 7.4, 150mM NaCl, 0.02% sodium azide and 50% glycerol. Store at +4°C short term. Store at -20°C long term. Avoid freeze / thaw cycle.

BCAR1 Antibody - Protein Information**Name** BCAR1**Synonyms** CAS, CASS1, CRKAS**Function**

Docking protein which plays a central coordinating role for tyrosine kinase-based signaling related to cell adhesion (PubMed:12432078, PubMed:12832404). Implicated in induction of cell migration and cell branching (PubMed:12432078, PubMed:12832404, PubMed:17038317).

Involved in the BCAR3-mediated inhibition of TGFB signaling (By similarity).

Cellular Location

Cell junction, focal adhesion. Cytoplasm Cell projection, axon {ECO:0000250|UniProtKB:Q61140}
Note=Unphosphorylated form localizes in the cytoplasm (By similarity) Localizes to focal adhesion sites following integrin engagement (By similarity). {ECO:0000250|UniProtKB:Q61140}

Tissue Location

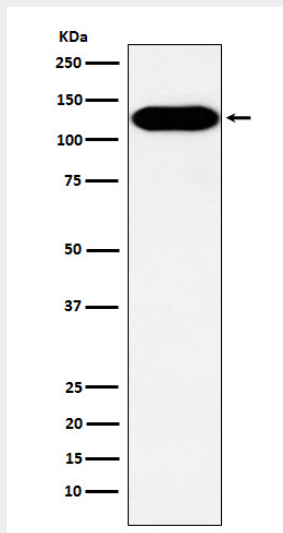
Expressed in B-cells (at protein level) (PubMed:9020138). Widely expressed with an abundant expression in the testis (PubMed:10639512). Low level of expression seen in the liver, thymus, and peripheral blood leukocytes (PubMed:10639512)

BCAR1 Antibody - Protocols

Provided below are standard protocols that you may find useful for product applications.

- [Western Blot](#)
- [Blocking Peptides](#)
- [Dot Blot](#)
- [Immunohistochemistry](#)
- [Immunofluorescence](#)
- [Immunoprecipitation](#)
- [Flow Cytometry](#)
- [Cell Culture](#)

BCAR1 Antibody - Images



Western blot analysis of BCAR1 expression in A431 cell lysate.