

**THRA Antibody**  
**Rabbit mAb**  
**Catalog # AP92371****Specification**

---

**THRA Antibody - Product Information**

Application	WB
Primary Accession	<a href="#">P10827</a>
Clonality	Monoclonal
Other Names	
AR7; CHNG6; EAR7; ERB-T-1; ERBA; ERBA1; NR1A1; THRA; THRA1; THRA2;	
Isotype	Rabbit IgG
Host	Rabbit
Calculated MW	54816 Da

**THRA Antibody - Additional Information**

Dilution	WB~~1:1000
Purification	Affinity-chromatography
Immunogen	A synthesized peptide derived from human THRA
Description	Nuclear hormone receptor that can act as a repressor or activator of transcription. High affinity receptor for thyroid hormones, including triiodothyronine and thyroxine.
Storage Condition and Buffer	Rabbit IgG in phosphate buffered saline , pH 7.4, 150mM NaCl, 0.02% sodium azide and 50% glycerol. Store at +4°C short term. Store at -20°C long term. Avoid freeze / thaw cycle.

**THRA Antibody - Protein Information****Name** THRA**Synonyms** EAR7, ERBA1, NR1A1, THRA1, THRA2**Function**

[Isoform Alpha-1]: Nuclear hormone receptor that can act as a repressor or activator of transcription. High affinity receptor for thyroid hormones, including triiodothyronine and thyroxine.

**Cellular Location**

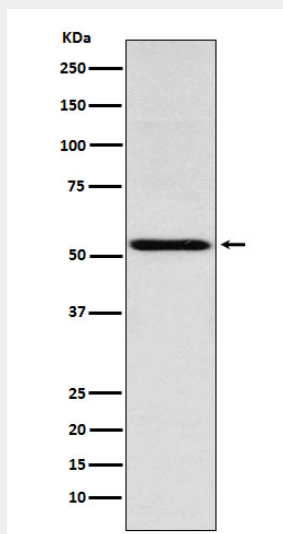
Nucleus.

**THRA Antibody - Protocols**

Provided below are standard protocols that you may find useful for product applications.

- [Western Blot](#)
- [Blocking Peptides](#)
- [Dot Blot](#)
- [Immunohistochemistry](#)
- [Immunofluorescence](#)
- [Immunoprecipitation](#)
- [Flow Cytometry](#)
- [Cell Culture](#)

#### THRA Antibody - Images



Western blot analysis of THRA expression in Jurkat cell lysate.