

PDZK1 Antibody
Rabbit mAb
Catalog # AP92377**Specification**

PDZK1 Antibody - Product Information

Application	WB, IP
Primary Accession	Q5T2W1
Clonality	Monoclonal
Other Names	
CAP70; CLAMP; PDZD1; NHERF3; NHERF-3;	
Isotype	Rabbit IgG
Host	Rabbit
Calculated MW	57129 Da

PDZK1 Antibody - Additional Information

Dilution	WB~~1:1000 IP~~N/A
Purification	Affinity-chromatography
Immunogen	A synthesized peptide derived from human PDZK1
Description	A scaffold protein that connects plasma membrane proteins and regulatory components, regulating their surface expression in epithelial cells apical domains.
Storage Condition and Buffer	Rabbit IgG in phosphate buffered saline , pH 7.4, 150mM NaCl, 0.02% sodium azide and 50% glycerol. Store at +4°C short term. Store at -20°C long term. Avoid freeze / thaw cycle.

PDZK1 Antibody - Protein Information**Name** PDZK1**Synonyms** CAP70, NHERF3, PDZD1**Function**

A scaffold protein that connects plasma membrane proteins and regulatory components, regulating their surface expression in epithelial cells apical domains. May be involved in the coordination of a diverse range of regulatory processes for ion transport and second messenger cascades. In complex with NHERF1, may cluster proteins that are functionally dependent in a mutual fashion and modulate the trafficking and the activity of the associated membrane proteins. May play a role in the cellular mechanisms associated with multidrug resistance through its interaction with ABCC2 and PDZK1IP1. May potentiate the CFTR chloride channel activity. Required for normal cell-surface expression of SCARB1. Plays a role in maintaining normal plasma

cholesterol levels via its effects on SCARB1. Plays a role in the normal localization and function of the chloride-anion exchanger SLC26A6 to the plasma membrane in the brush border of the proximal tubule of the kidney. May be involved in the regulation of proximal tubular Na(+)-dependent inorganic phosphate cotransport therefore playing an important role in tubule function (By similarity).

Cellular Location

Membrane {ECO:0000250|UniProtKB:Q9JJ40}; Peripheral membrane protein {ECO:0000250|UniProtKB:Q9JJ40}. Cell membrane {ECO:0000250|UniProtKB:Q9JIL4}. Note=Associated with peripheral membranes. Localizes to the apical compartment of proximal tubular cells and to sinusoidal liver membranes {ECO:0000250|UniProtKB:Q9JJ40}

Tissue Location

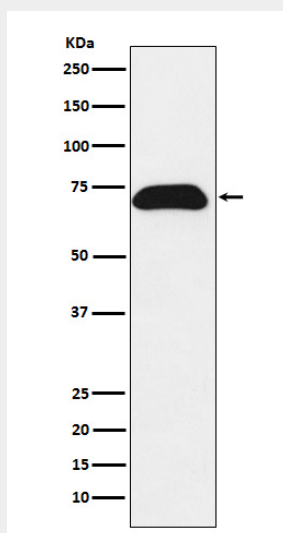
Expression is limited to epithelial cells. Expressed in the kidney (brush border of proximal tubule), pancreas, liver, and small intestine. Expressed at a lower level in the adrenal cortex, testis and stomach. Overexpressed in breast, renal and lung carcinomas.

PDZK1 Antibody - Protocols

Provided below are standard protocols that you may find useful for product applications.

- [Western Blot](#)
- [Blocking Peptides](#)
- [Dot Blot](#)
- [Immunohistochemistry](#)
- [Immunofluorescence](#)
- [Immunoprecipitation](#)
- [Flow Cytometry](#)
- [Cell Culture](#)

PDZK1 Antibody - Images



Western blot analysis of PDZK1 expression in T47-D cell lysate.