

**DCR2 Antibody**  
**Rabbit mAb**  
**Catalog # AP92380**

## Specification

---

### DCR2 Antibody - Product Information

Application	WB, IHC, ICC
Primary Accession	<a href="#">Q9UBN6</a>
Clonality	Monoclonal
<b>Other Names</b>	
DcR2; TRAIL receptor 4; TRAIL-R4; CD264; TNFRSF10D; DCR2; TRAILR4; TRUND;D;	
Isotype	Rabbit IgG
Host	Rabbit
Calculated MW	41823 Da

### DCR2 Antibody - Additional Information

Dilution	WB~~1:1000 IHC~~1:100~500 ICC~~N/A
Purification	Affinity-chromatography
Immunogen	A synthesized peptide derived from human DCR2
Description	Receptor for the cytotoxic ligand TRAIL. Contains a truncated death domain and hence is not capable of inducing apoptosis but protects against TRAIL-mediated apoptosis. Reports are contradictory with regards to its ability to induce the NF-kappa-B pathway.
Storage Condition and Buffer	Rabbit IgG in phosphate buffered saline , pH 7.4, 150mM NaCl, 0.02% sodium azide and 50% glycerol. Store at +4°C short term. Store at -20°C long term. Avoid freeze / thaw cycle.

### DCR2 Antibody - Protein Information

**Name** TNFRSF10D ([HGNC:11907](#))

#### Function

Receptor for the cytotoxic ligand TRAIL (PubMed:<a href="http://www.uniprot.org/citations/9430226" target="\_blank">9430226</a>). Contains a truncated death domain and hence is not capable of inducing apoptosis but protects against TRAIL-mediated apoptosis (PubMed:<a href="http://www.uniprot.org/citations/9537512" target="\_blank">9537512</a>). Reports are contradictory with regards to its ability to induce the NF-kappa-B pathway. According to PubMed:<a href="http://www.uniprot.org/citations/9382840" target="\_blank">9382840</a>, it cannot but according to PubMed:<a

[9430226](http://www.uniprot.org/citations/9430226), it can induce the NF-kappa-B pathway (PubMed: [9382840](http://www.uniprot.org/citations/9382840), PubMed: [9430226](http://www.uniprot.org/citations/9430226)).

#### Cellular Location

Membrane; Single-pass type I membrane protein

#### Tissue Location

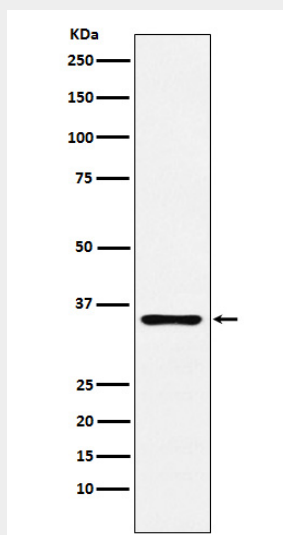
Widely expressed, in particular in fetal kidney, lung and liver, and in adult testis and liver. Also expressed in peripheral blood leukocytes, colon and small intestine, ovary, prostate, thymus, spleen, pancreas, kidney, lung, placenta and heart

### DCR2 Antibody - Protocols

Provided below are standard protocols that you may find useful for product applications.

- [Western Blot](#)
- [Blocking Peptides](#)
- [Dot Blot](#)
- [Immunohistochemistry](#)
- [Immunofluorescence](#)
- [Immunoprecipitation](#)
- [Flow Cytometry](#)
- [Cell Culture](#)

### DCR2 Antibody - Images



Western blot analysis of DCR2 expression in Human prostate lysate.