

AP2 alpha Antibody
Rabbit mAb
Catalog # AP92381**Specification**

AP2 alpha Antibody - Product Information

Application	WB, IHC, FC, ICC, IP
Primary Accession	P05549
Reactivity	Rat
Clonality	Monoclonal

Other Names

AP 2alpha; AP-2; AP2; AP2TF; BOFS; TFAP2; TFAP2A;

Isotype	Rabbit IgG
Host	Rabbit
Calculated MW	48062 Da

AP2 alpha Antibody - Additional Information

Dilution	WB~~1:1000 IHC~~1:100~500 FC~~1:10~50 ICC~~N/A IP~~N/A
Purification	Affinity-chromatography
Immunogen	A synthesized peptide derived from human AP2 alpha
Description	Sequence-specific DNA-binding protein that interacts with inducible viral and cellular enhancer elements to regulate transcription of selected genes. AP-2 factors bind to the consensus sequence 5'-GCCNNNGGC-3' and activate genes involved in a large spectrum of important biological functions including proper eye, face, body wall, limb and neural tube development.
Storage Condition and Buffer	Rabbit IgG in phosphate buffered saline , pH 7.4, 150mM NaCl, 0.02% sodium azide and 50% glycerol. Store at +4°C short term. Store at -20°C long term. Avoid freeze / thaw cycle.

AP2 alpha Antibody - Protein Information**Name** TFAP2A**Synonyms** AP2TF, TFAP2

Function

Sequence-specific DNA-binding protein that interacts with inducible viral and cellular enhancer elements to regulate transcription of selected genes. AP-2 factors bind to the consensus sequence 5'-GCCNNNGGC-3' and activate genes involved in a large spectrum of important biological functions including proper eye, face, body wall, limb and neural tube development. They also suppress a number of genes including MCAM/MUC18, C/EBP alpha and MYC. AP-2-alpha is the only AP-2 protein required for early morphogenesis of the lens vesicle. Together with the CITED2 coactivator, stimulates the PITX2 P1 promoter transcription activation. Associates with chromatin to the PITX2 P1 promoter region.

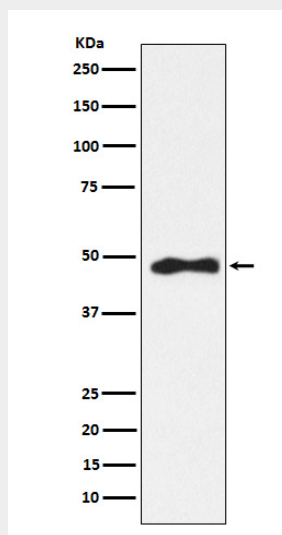
Cellular Location

Nucleus.

AP2 alpha Antibody - Protocols

Provided below are standard protocols that you may find useful for product applications.

- [Western Blot](#)
- [Blocking Peptides](#)
- [Dot Blot](#)
- [Immunohistochemistry](#)
- [Immunofluorescence](#)
- [Immunoprecipitation](#)
- [Flow Cytometry](#)
- [Cell Culture](#)

AP2 alpha Antibody - Images

Western blot analysis of AP2 alpha expression in Hela cell lysate.