

TIRAP Antibody
Rabbit mAb
Catalog # AP92382**Specification**

TIRAP Antibody - Product Information

Application	WB
Primary Accession	P58753
Reactivity	Rat
Clonality	Monoclonal
Other Names	
MAL; Wyatt;	
Isotype	Rabbit IgG
Host	Rabbit
Calculated MW	23883 Da

TIRAP Antibody - Additional Information

Dilution	WB~~1:1000
Purification	Affinity-chromatography
Immunogen	A synthesized peptide derived from human TIRAP
Description	The Toll-like receptor (TLR) family in mammals comprises a family of transmembrane proteins characterized by multiple copies of leucine rich repeats in the extracellular domain and IL-1 receptor motif in the cytoplasmic domain. Like its counterparts in Drosophila, TLRs signal through adaptor molecules.
Storage Condition and Buffer	Rabbit IgG in phosphate buffered saline , pH 7.4, 150mM NaCl, 0.02% sodium azide and 50% glycerol. Store at +4°C short term. Store at -20°C long term. Avoid freeze / thaw cycle.

TIRAP Antibody - Protein Information**Name** TIRAP**Synonyms** MAL**Function**

Adapter involved in TLR2, TLR4 and RAGE signaling pathways in the innate immune response. Acts via IRAK2 and TRAF-6, leading to the activation of NF-kappa-B, MAPK1, MAPK3 and JNK, and resulting in cytokine secretion and the inflammatory response. Positively regulates the production of TNF-alpha (TNF) and interleukin-6 (IL6).

Cellular Location

Cytoplasm. Cell membrane. Membrane. Note=Colocalizes with DAB2IP at the plasma membrane

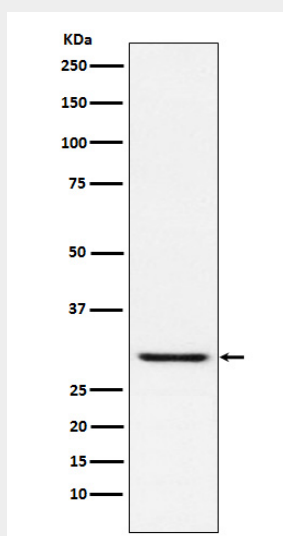
Tissue Location

Highly expressed in liver, kidney, spleen, skeletal muscle and heart. Also detected in peripheral blood leukocytes, lung, placenta, small intestine, thymus, colon and brain

TIRAP Antibody - Protocols

Provided below are standard protocols that you may find useful for product applications.

- [Western Blot](#)
- [Blocking Peptides](#)
- [Dot Blot](#)
- [Immunohistochemistry](#)
- [Immunofluorescence](#)
- [Immunoprecipitation](#)
- [Flow Cytometry](#)
- [Cell Culture](#)

TIRAP Antibody - Images

Western blot analysis of TIRAP expression in HUVEC cell lysate.