

RAD23A Antibody
Rabbit mAb
Catalog # AP92385

Specification

RAD23A Antibody - Product Information

Application	WB, FC
Primary Accession	P54725
Reactivity	Rat
Clonality	Monoclonal
Other Names	
hHR23A; HR23A; RAD 23a; RAD23A;	
Isotype	Rabbit IgG
Host	Rabbit
Calculated MW	39609 Da

RAD23A Antibody - Additional Information

Purification	Affinity-chromatography
Immunogen	A synthesized peptide derived from human RAD23A
Description	Multiubiquitin chain receptor involved in modulation of proteasomal degradation. Binds to 'Lys-48'-linked polyubiquitin chains in a length-dependent manner and with a lower affinity to 'Lys-63'-linked polyubiquitin chains.
Storage Condition and Buffer	Rabbit IgG in phosphate buffered saline , pH 7.4, 150mM NaCl, 0.02% sodium azide and 50% glycerol. Store at +4°C short term. Store at -20°C long term. Avoid freeze / thaw cycle.

RAD23A Antibody - Protein Information

Name RAD23A

Function

Multiubiquitin chain receptor involved in modulation of proteasomal degradation. Binds to 'Lys-48'-linked polyubiquitin chains in a length-dependent manner and with a lower affinity to 'Lys-63'-linked polyubiquitin chains. Proposed to be capable to bind simultaneously to the 26S proteasome and to polyubiquitinated substrates and to deliver ubiquitinated proteins to the proteasome. (Microbial infection) Involved in Vpr-dependent replication of HIV-1 in non-proliferating cells and primary macrophages. Required for the association of HIV-1 Vpr with the host proteasome.

Cellular Location

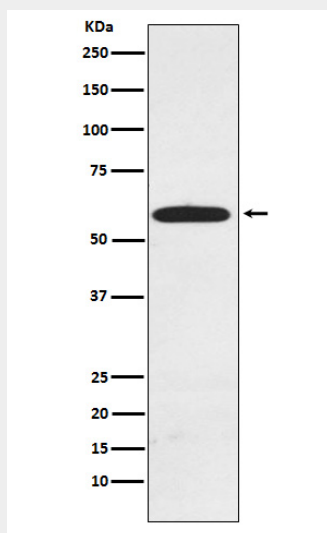
Nucleus.

RAD23A Antibody - Protocols

Provided below are standard protocols that you may find useful for product applications.

- [Western Blot](#)
- [Blocking Peptides](#)
- [Dot Blot](#)
- [Immunohistochemistry](#)
- [Immunofluorescence](#)
- [Immunoprecipitation](#)
- [Flow Cytometry](#)
- [Cell Culture](#)

RAD23A Antibody - Images



Western blot analysis of RAD23A expression in MCF7 cell lysate.