

MBNL1 Antibody
Rabbit mAb
Catalog # AP92389**Specification**

MBNL1 Antibody - Product Information

Application	WB
Primary Accession	Q9NR56
Clonality	Monoclonal
Other Names	
EXP; EXP35; EXP40; EXP42; MBNL; MBNL1;	
Isotype	Rabbit IgG
Host	Rabbit
Calculated MW	41817 Da

MBNL1 Antibody - Additional Information

Dilution	WB~~1:1000
Purification	Affinity-chromatography
Immunogen	A synthesized peptide derived from human MBNL1
Description	Mediates pre-mRNA alternative splicing regulation. Acts either as activator or repressor of splicing on specific pre-mRNA targets. Inhibits cardiac troponin-T (TNNT2) pre-mRNA exon inclusion but induces insulin receptor (IR) pre-mRNA exon inclusion in muscle. Antagonizes the alternative splicing activity pattern of CELF proteins.
Storage Condition and Buffer	Rabbit IgG in phosphate buffered saline , pH 7.4, 150mM NaCl, 0.02% sodium azide and 50% glycerol. Store at +4°C short term. Store at -20°C long term. Avoid freeze / thaw cycle.

MBNL1 Antibody - Protein Information**Name** MBNL1**Synonyms** EXP, KIAA0428, MBNL**Function**

Mediates pre-mRNA alternative splicing regulation. Acts either as activator or repressor of splicing on specific pre-mRNA targets. Inhibits cardiac troponin-T (TNNT2) pre-mRNA exon inclusion but induces insulin receptor (IR) pre-mRNA exon inclusion in muscle. Antagonizes the alternative splicing activity pattern of CELF proteins. Regulates the TNNT2 exon 5 skipping through competition with U2AF2. Inhibits the formation of the spliceosome A complex on intron 4 of TNNT2

pre-mRNA. Binds to the stem-loop structure within the polypyrimidine tract of TNNT2 intron 4 during spliceosome assembly. Binds to the 5'-YGCU(U/G)Y-3' consensus sequence. Binds to the IR RNA. Binds to expanded CUG repeat RNA, which folds into a hairpin structure containing GC base pairs and bulged, unpaired U residues. Together with RNA binding proteins RBPMS and RBFOX2, activates vascular smooth muscle cells alternative splicing events (PubMed:37548402). Regulates NCOR2 alternative splicing (By similarity).

Cellular Location

Nucleus. Cytoplasm. Cytoplasmic granule. Note=Localized with DDX1, TIAL1 and YBX1 in stress granules upon stress (PubMed:18335541). Localized in the cytoplasm of multinucleated myotubes (PubMed:18335541). Colocalizes with nuclear foci of retained expanded-repeat transcripts in myotubes from patients affected by myotonic dystrophy (PubMed:10970838, PubMed:11590133, PubMed:11929853)

Tissue Location

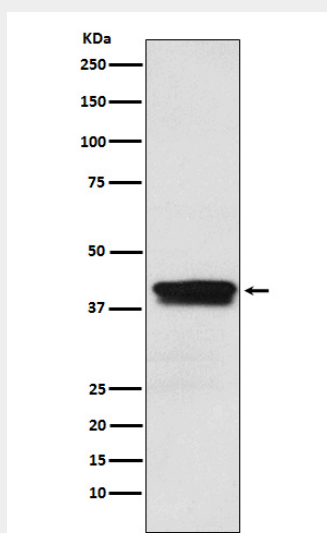
Highly expressed in cardiac, skeletal muscle and during myoblast differentiation. Weakly expressed in other tissues (at protein level). Expressed in heart, brain, placenta, lung, liver, skeletal muscle, kidney and pancreas.

MBNL1 Antibody - Protocols

Provided below are standard protocols that you may find useful for product applications.

- [Western Blot](#)
- [Blocking Peptides](#)
- [Dot Blot](#)
- [Immunohistochemistry](#)
- [Immunofluorescence](#)
- [Immunoprecipitation](#)
- [Flow Cytometry](#)
- [Cell Culture](#)

MBNL1 Antibody - Images



Western blot analysis of MBNL1 expression in Jurkat cell lysate.