

STXBP1 Antibody
Rabbit mAb
Catalog # AP92400**Specification**

STXBP1 Antibody - Product Information

Application	WB, IHC, ICC
Primary Accession	P61764
Reactivity	Rat
Clonality	Monoclonal
Other Names	
P67; NSEC1; UNC18; RBSEC1; MUNC18-1;	
Isotype	Rabbit IgG
Host	Rabbit
Calculated MW	67569 Da

STXBP1 Antibody - Additional Information

Dilution	WB~~1:1000 IHC~~1:100~500 ICC~~N/A
Purification	Affinity-chromatography
Immunogen	A synthesized peptide derived from human STXBP1
Description	May participate in the regulation of synaptic vesicle docking and fusion, possibly through interaction with GTP-binding proteins. Essential for neurotransmission and binds syntaxin, a component of the synaptic vesicle fusion machinery probably in a 1:1 ratio.
Storage Condition and Buffer	Rabbit IgG in phosphate buffered saline , pH 7.4, 150mM NaCl, 0.02% sodium azide and 50% glycerol. Store at +4°C short term. Store at -20°C long term. Avoid freeze / thaw cycle.

STXBP1 Antibody - Protein Information**Name** STXBP1**Synonyms** UNC18A**Function**

Participates in the regulation of synaptic vesicle docking and fusion through interaction with GTP-binding proteins (By similarity). Essential for neurotransmission and binds syntaxin, a component of the synaptic vesicle fusion machinery probably in a 1:1 ratio. Can interact with syntaxins 1, 2, and 3 but not syntaxin 4. Involved in the release of neurotransmitters from neurons

through interacting with SNARE complex component STX1A and mediating the assembly of the SNARE complex at synaptic membranes (By similarity). May play a role in determining the specificity of intracellular fusion reactions.

Cellular Location

Cytoplasm, cytosol. Membrane; Peripheral membrane protein

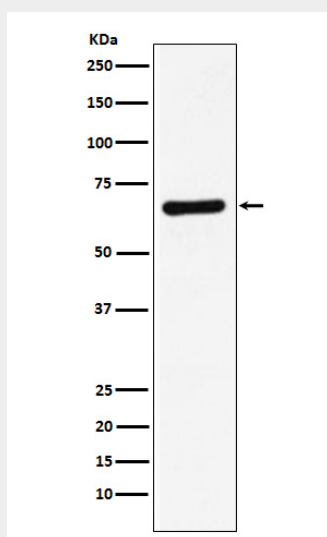
Tissue Location

Brain and spinal cord. Highly enriched in axons.

STXBP1 Antibody - Protocols

Provided below are standard protocols that you may find useful for product applications.

- [Western Blot](#)
- [Blocking Peptides](#)
- [Dot Blot](#)
- [Immunohistochemistry](#)
- [Immunofluorescence](#)
- [Immunoprecipitation](#)
- [Flow Cytometry](#)
- [Cell Culture](#)

STXBP1 Antibody - Images

Western blot analysis of STXBP1 expression in HeLa cell lysate.