

TRAP1 Antibody
Rabbit mAb
Catalog # AP92402**Specification**

TRAP1 Antibody - Product Information

Application	WB, IHC, ICC
Primary Accession	Q12931
Clonality	Monoclonal
Other Names	
HSP75; HSP90L; Trap1;	
Isotype	Rabbit IgG
Host	Rabbit
Calculated MW	80110 Da

TRAP1 Antibody - Additional Information

Dilution	WB~~1:1000 IHC~~1:100~500 ICC~~N/A
Purification	Affinity-chromatography
Immunogen	A synthesized peptide derived from human TRAP1
Description	Chaperone that expresses an ATPase activity.
Storage Condition and Buffer	Rabbit IgG in phosphate buffered saline , pH 7.4, 150mM NaCl, 0.02% sodium azide and 50% glycerol. Store at +4°C short term. Store at -20°C long term. Avoid freeze / thaw cycle.

TRAP1 Antibody - Protein Information**Name** TRAP1**Synonyms** HSP75, HSPC5 {ECO:0000303|PubMed:1866360}**Function**

Chaperone that expresses an ATPase activity. Involved in maintaining mitochondrial function and polarization, downstream of PINK1 and mitochondrial complex I. Is a negative regulator of mitochondrial respiration able to modulate the balance between oxidative phosphorylation and aerobic glycolysis. The impact of TRAP1 on mitochondrial respiration is probably mediated by modulation of mitochondrial SRC and inhibition of SDHA.

Cellular Location

Mitochondrion. Mitochondrion inner membrane Mitochondrion matrix

Tissue Location

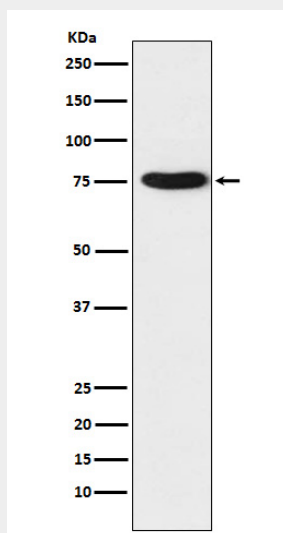
Found in skeletal muscle, liver, heart, brain, kidney, pancreas, lung, placenta and bladder. Expression is highly reduced in bladder cancer and renal cell carcinoma specimens compared to healthy tissues, but it is increased in other type of tumors

TRAP1 Antibody - Protocols

Provided below are standard protocols that you may find useful for product applications.

- [Western Blot](#)
- [Blocking Peptides](#)
- [Dot Blot](#)
- [Immunohistochemistry](#)
- [Immunofluorescence](#)
- [Immunoprecipitation](#)
- [Flow Cytometry](#)
- [Cell Culture](#)

TRAP1 Antibody - Images



Western blot analysis of TRAP1 expression in K562 cell lysate.