

**VEGFB Antibody**  
**Rabbit mAb**  
**Catalog # AP92403****Specification**

---

**VEGFB Antibody - Product Information**

Application	WB
Primary Accession	<a href="#">P49765</a>
Clonality	Monoclonal
<b>Other Names</b>	
VEGF B; Vegfb; VEGFL; VRF;	
Isotype	Rabbit IgG
Host	Rabbit
Calculated MW	21602 Da

**VEGFB Antibody - Additional Information**

Dilution	WB~~1:1000
Purification	Affinity-chromatography
Immunogen	A synthesized peptide derived from human VEGFB
Description	Growth factor for endothelial cells. VEGF-B167 binds heparin and neuropilin-1 whereas the binding to neuropilin-1 of VEGF-B186 is regulated by proteolysis.
Storage Condition and Buffer	Rabbit IgG in phosphate buffered saline , pH 7.4, 150mM NaCl, 0.02% sodium azide and 50% glycerol. Store at +4°C short term. Store at -20°C long term. Avoid freeze / thaw cycle.

**VEGFB Antibody - Protein Information****Name** VEGFB**Synonyms** VRF**Function**

Growth factor for endothelial cells. VEGF-B167 binds heparin and neuropilin-1 whereas the binding to neuropilin-1 of VEGF-B186 is regulated by proteolysis.

**Cellular Location**

Secreted. Note=Secreted but remains associated to cells or to the extracellular matrix unless released by heparin

**Tissue Location**

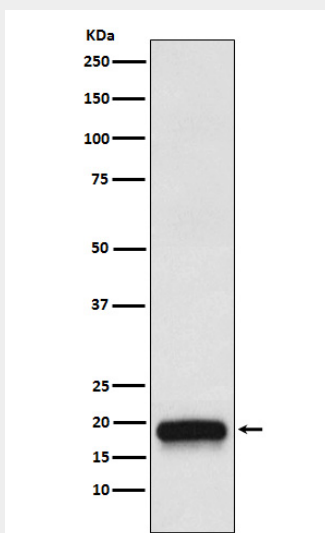
Expressed in all tissues except liver. Highest levels found in heart, skeletal muscle and pancreas

## VEGFB Antibody - Protocols

Provided below are standard protocols that you may find useful for product applications.

- [Western Blot](#)
- [Blocking Peptides](#)
- [Dot Blot](#)
- [Immunohistochemistry](#)
- [Immunofluorescence](#)
- [Immunoprecipitation](#)
- [Flow Cytometry](#)
- [Cell Culture](#)

## VEGFB Antibody - Images



Western blot analysis of VEGFB expression in 293T cell transfected with VEGFB recombinant protein.