

**ApoH Antibody**  
**Rabbit mAb**  
**Catalog # AP92413****Specification**

---

**ApoH Antibody - Product Information**

Application	WB, ICC, IP
Primary Accession	<a href="#">P02749</a>
Reactivity	Rat
Clonality	Monoclonal
<b>Other Names</b>	
APC inhibitor; APOH; Apolipoprotein H; B2G1; B2GP1; B2GPI; BG;	
Isotype	Rabbit IgG
Host	Rabbit
Calculated MW	38298 Da

**ApoH Antibody - Additional Information**

Dilution	WB~~1:1000 ICC~~N/A IP~~N/A
Purification	Affinity-chromatography
Immunogen	A synthesized peptide derived from human ApoH
Description	Binds to various kinds of negatively charged substances such as heparin, phospholipids, and dextran sulfate. May prevent activation of the intrinsic blood coagulation cascade by binding to phospholipids on the surface of damaged cells.
Storage Condition and Buffer	Rabbit IgG in phosphate buffered saline , pH 7.4, 150mM NaCl, 0.02% sodium azide and 50% glycerol. Store at +4°C short term. Store at -20°C long term. Avoid freeze / thaw cycle.

**ApoH Antibody - Protein Information****Name** APOH**Synonyms** B2G1**Function**

Binds to various kinds of negatively charged substances such as heparin, phospholipids, and dextran sulfate. May prevent activation of the intrinsic blood coagulation cascade by binding to phospholipids on the surface of damaged cells.

**Cellular Location**

Secreted.

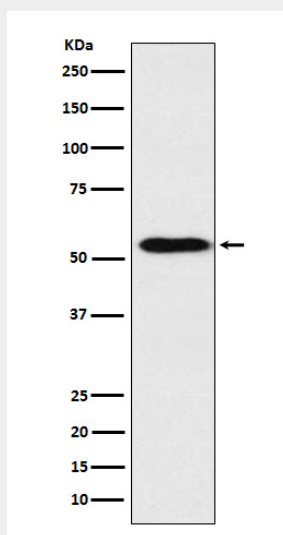
**Tissue Location**

Expressed by the liver and secreted in plasma.

**ApoH Antibody - Protocols**

Provided below are standard protocols that you may find useful for product applications.

- [Western Blot](#)
- [Blocking Peptides](#)
- [Dot Blot](#)
- [Immunohistochemistry](#)
- [Immunofluorescence](#)
- [Immunoprecipitation](#)
- [Flow Cytometry](#)
- [Cell Culture](#)

**ApoH Antibody - Images**

Western blot analysis of ApoH expression in Human plasma lysate.