

**NR2E1 Antibody**  
**Rabbit mAb**  
**Catalog # AP92414****Specification**

---

**NR2E1 Antibody - Product Information**

Application	WB
Primary Accession	<a href="#">Q9Y466</a>
Reactivity	Rat
Clonality	Monoclonal
<b>Other Names</b>	
hTll; nr2e1; Tll; TLX; XTLL;	
Isotype	Rabbit IgG
Host	Rabbit
Calculated MW	42589 Da

**NR2E1 Antibody - Additional Information**

Dilution	WB~~1:1000
Purification	Affinity-chromatography
Immunogen	A synthesized peptide derived from human NR2E1
Description	Orphan receptor that binds DNA as a monomer to hormone response elements (HRE) containing an extended core motif half-site sequence 5'-AAGGTCA-3' in which the 5' flanking nucleotides participate in determining receptor specificity.
Storage Condition and Buffer	Rabbit IgG in phosphate buffered saline , pH 7.4, 150mM NaCl, 0.02% sodium azide and 50% glycerol. Store at +4°C short term. Store at -20°C long term. Avoid freeze / thaw cycle.

**NR2E1 Antibody - Protein Information****Name** NR2E1**Synonyms** TLX**Function**

Orphan receptor that binds DNA as a monomer to hormone response elements (HRE) containing an extended core motif half-site sequence 5'-AAGGTCA-3' in which the 5' flanking nucleotides participate in determining receptor specificity (By similarity). May be required to pattern anterior brain differentiation. Involved in the regulation of retinal development and essential for vision. During retinogenesis, regulates PTEN-Cyclin D expression via binding to the promoter region of PTEN and suppressing its activity (By similarity). May be involved in retinoic acid receptor (RAR) regulation in retinal cells.

**Cellular Location**

Nucleus {ECO:0000255|PROSITE-ProRule:PRU00407}.

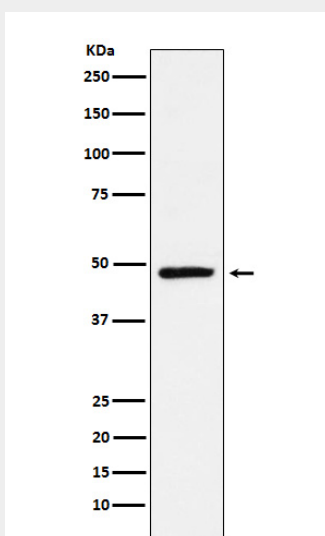
**Tissue Location**

Brain specific. Present in all brain sections tested, highest levels in the caudate nucleus and hippocampus, weakest levels in the thalamus.

**NR2E1 Antibody - Protocols**

Provided below are standard protocols that you may find useful for product applications.

- [Western Blot](#)
- [Blocking Peptides](#)
- [Dot Blot](#)
- [Immunohistochemistry](#)
- [Immunofluorescence](#)
- [Immunoprecipitation](#)
- [Flow Cytometry](#)
- [Cell Culture](#)

**NR2E1 Antibody - Images**

Western blot analysis of NR2E1 / Tailless expression in SH-SY5Y cell lysate.