

WIF1 Antibody
Rabbit mAb
Catalog # AP92423**Specification**

WIF1 Antibody - Product Information

Application	WB, IP
Primary Accession	O9Y5W5
Reactivity	Rat
Clonality	Monoclonal
Other Names	
wif1; Wnt inhibitory factor 1;	
Isotype	Rabbit IgG
Host	Rabbit
Calculated MW	41528 Da

WIF1 Antibody - Additional Information

Dilution	WB~~1:1000 IP~~N/A
Purification	Affinity-chromatography
Immunogen	A synthesized peptide derived from human WIF1
Description	Binds to WNT proteins and inhibits their activities. May be involved in mesoderm segmentation.
Storage Condition and Buffer	Rabbit IgG in phosphate buffered saline , pH 7.4, 150mM NaCl, 0.02% sodium azide and 50% glycerol. Store at +4°C short term. Store at -20°C long term. Avoid freeze / thaw cycle.

WIF1 Antibody - Protein Information**Name** WIF1**Function**

Binds to WNT proteins and inhibits their activities. May be involved in mesoderm segmentation.

Cellular Location

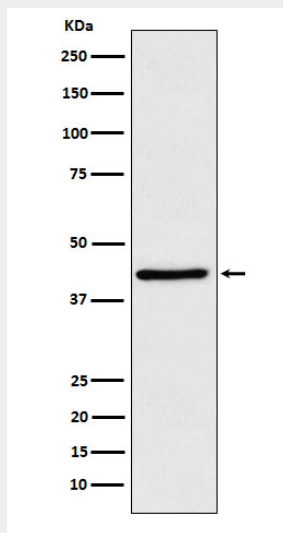
Secreted.

WIF1 Antibody - Protocols

Provided below are standard protocols that you may find useful for product applications.

- [Western Blot](#)
- [Blocking Peptides](#)
- [Dot Blot](#)
- [Immunohistochemistry](#)
- [Immunofluorescence](#)
- [Immunoprecipitation](#)
- [Flow Cytometry](#)
- [Cell Culture](#)

WIF1 Antibody - Images



Western blot analysis of WIF1 expression in HeLa cell lysate.