

**STC1 Antibody**  
**Rabbit mAb**  
**Catalog # AP92437**

## Specification

---

### STC1 Antibody - Product Information

Application	<b>WB, IP</b>
Primary Accession	<a href="#">P52823</a>
Clonality	<b>Monoclonal</b>
<b>Other Names</b>	
Stanniocalcin; STC; STC-1; Stc1;	
Isotype	<b>Rabbit IgG</b>
Host	<b>Rabbit</b>
Calculated MW	<b>27621 Da</b>

### STC1 Antibody - Additional Information

Dilution	<b>WB~~1:1000</b> <b>IP~~N/A</b>
Purification	<b>Affinity-chromatography</b>
Immunogen	<b>A synthesized peptide derived from human STC1</b>
Description	<b>Stimulates renal phosphate reabsorption, and could therefore prevent hypercalcemia.</b>
Storage Condition and Buffer	<b>Rabbit IgG in phosphate buffered saline , pH 7.4, 150mM NaCl, 0.02% sodium azide and 50% glycerol. Store at +4°C short term. Store at -20°C long term. Avoid freeze / thaw cycle.</b>

### STC1 Antibody - Protein Information

**Name** STC1

**Synonyms** STC

#### **Function**

Stimulates renal phosphate reabsorption, and could therefore prevent hypercalcemia.

#### **Cellular Location**

Secreted.

#### **Tissue Location**

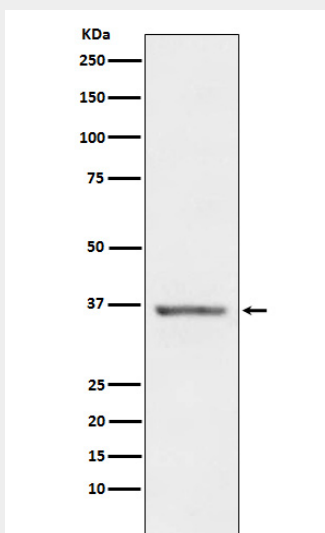
Expressed in most tissues, with the highest levels in ovary, prostate, heart, kidney and thyroid. In the kidney, expression is confined to the nephron, specifically in the distal convoluted tubule and in the collecting tubule. Not detected in the brain, liver, spleen, peripheral blood leukocytes and adrenal medulla

## STC1 Antibody - Protocols

Provided below are standard protocols that you may find useful for product applications.

- [Western Blot](#)
- [Blocking Peptides](#)
- [Dot Blot](#)
- [Immunohistochemistry](#)
- [Immunofluorescence](#)
- [Immunoprecipitation](#)
- [Flow Cytometry](#)
- [Cell Culture](#)

## STC1 Antibody - Images



Western blot analysis of STC1 expression in Human Prostate lysate.