

FLAP Antibody
Rabbit mAb
Catalog # AP92442

Specification

FLAP Antibody - Product Information

Application	WB
Primary Accession	P20292
Clonality	Monoclonal
Other Names	
ALOX 5AP; ALOX5 AP; ALOX5AP; FLAP;	
Isotype	Rabbit IgG
Host	Rabbit
Calculated MW	18157 Da

FLAP Antibody - Additional Information

Dilution	WB~~1:1000
Purification	Affinity-chromatography
Immunogen	A synthesized peptide derived from human FLAP
Description	Required for leukotriene biosynthesis by ALOX5 (5-lipoxygenase). Anchors ALOX5 to the membrane. Binds arachidonic acid, and could play an essential role in the transfer of arachidonic acid to ALOX5. Binds to MK-886, a compound that blocks the biosynthesis of leukotrienes.
Storage Condition and Buffer	Rabbit IgG in phosphate buffered saline , pH 7.4, 150mM NaCl, 0.02% sodium azide and 50% glycerol. Store at +4°C short term. Store at -20°C long term. Avoid freeze / thaw cycle.

FLAP Antibody - Protein Information

Name ALOX5AP

Synonyms FLAP

Function

Required for leukotriene biosynthesis by ALOX5 (5- lipoxygenase). Anchors ALOX5 to the membrane. Binds arachidonic acid, and could play an essential role in the transfer of arachidonic acid to ALOX5. Binds to MK-886, a compound that blocks the biosynthesis of leukotrienes.

Cellular Location

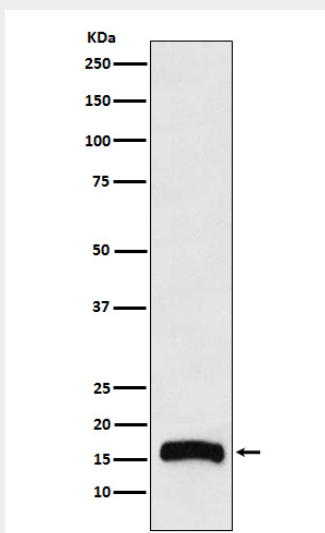
Nucleus membrane; Multi-pass membrane protein. Endoplasmic reticulum membrane; Multi-pass membrane protein

FLAP Antibody - Protocols

Provided below are standard protocols that you may find useful for product applications.

- [Western Blot](#)
- [Blocking Peptides](#)
- [Dot Blot](#)
- [Immunohistochemistry](#)
- [Immunofluorescence](#)
- [Immunoprecipitation](#)
- [Flow Cytometry](#)
- [Cell Culture](#)

FLAP Antibody - Images



Western blot analysis of FLAP expression in THP1 cell lysate.