

RYK Antibody
Rabbit mAb
Catalog # AP92445

Specification

RYK Antibody - Product Information

Application WB, IHC, FC, ICC, IP
Primary Accession [P34925](#)
Clonality Monoclonal
Other Names
ERK 3; JTK5; JTK5A; Ryk; RYK1; Vik;

Isotype Rabbit IgG
Host Rabbit
Calculated MW 67815 Da

RYK Antibody - Additional Information

Dilution WB~~1:1000
IHC~~1:100~500
FC~~1:10~50
ICC~~N/A
IP~~N/A
Purification Affinity-chromatography
Immunogen A synthesized peptide derived from human RYK
Description May be a coreceptor along with FZD8 of Wnt proteins, such as WNT1, WNT3, WNT3A and WNT5A. Involved in neuron differentiation, axon guidance, corpus callosum establishment and neurite outgrowth. In response to WNT3 stimulation, receptor C-terminal cleavage occurs in its transmembrane region and allows the C-terminal intracellular product to translocate from the cytoplasm to the nucleus where it plays a crucial role in neuronal development.
Storage Condition and Buffer Rabbit IgG in phosphate buffered saline , pH 7.4, 150mM NaCl, 0.02% sodium azide and 50% glycerol. Store at +4°C short term. Store at -20°C long term. Avoid freeze / thaw cycle.

RYK Antibody - Protein Information

Name RYK ([HGNC:10481](#))

Synonyms JTK5A

Function

May be a coreceptor along with FZD8 of Wnt proteins, such as WNT1, WNT3, WNT3A and WNT5A. Involved in neuron differentiation, axon guidance, corpus callosum establishment and neurite outgrowth. In response to WNT3 stimulation, receptor C-terminal cleavage occurs in its transmembrane region and allows the C-terminal intracellular product to translocate from the cytoplasm to the nucleus where it plays a crucial role in neuronal development.

Cellular Location

Membrane; Single-pass type I membrane protein. Nucleus. Cytoplasm. Note=In cells that have undergone neuronal differentiation, the C-terminal cleaved part is translocated from the cytoplasm to the nucleus.

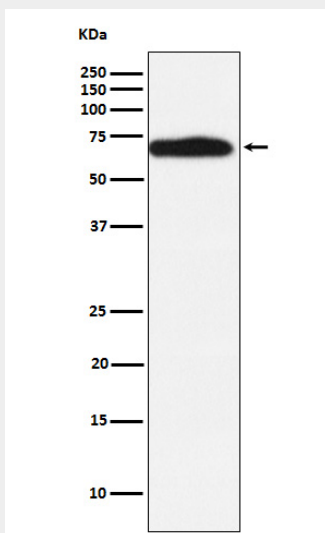
Tissue Location

Observed in all the tissues examined.

RYK Antibody - Protocols

Provided below are standard protocols that you may find useful for product applications.

- [Western Blot](#)
- [Blocking Peptides](#)
- [Dot Blot](#)
- [Immunohistochemistry](#)
- [Immunofluorescence](#)
- [Immunoprecipitation](#)
- [Flow Cytometry](#)
- [Cell Culture](#)

RYK Antibody - Images

Western blot analysis of RYK expression in MCF7 cell lysate.