

RAD52 Antibody
Rabbit mAb
Catalog # AP92447**Specification**

RAD52 Antibody - Product Information

Application	WB
Primary Accession	P43351
Clonality	Monoclonal
Other Names	
Rad52; RAD52 homolog;	
Isotype	Rabbit IgG
Host	Rabbit
Calculated MW	46169 Da

RAD52 Antibody - Additional Information

Dilution	WB~~1:1000
Purification	Affinity-chromatography
Immunogen	A synthesized peptide derived from human RAD52
Description	Involved in double-stranded break repair. Plays a central role in genetic recombination and DNA repair by promoting the annealing of complementary single-stranded DNA and by stimulation of the RAD51 recombinase.
Storage Condition and Buffer	Rabbit IgG in phosphate buffered saline , pH 7.4, 150mM NaCl, 0.02% sodium azide and 50% glycerol. Store at +4°C short term. Store at -20°C long term. Avoid freeze / thaw cycle.

RAD52 Antibody - Protein Information**Name** RAD52**Function**

Involved in double-stranded break repair. Plays a central role in genetic recombination and DNA repair by promoting the annealing of complementary single-stranded DNA and by stimulation of the RAD51 recombinase.

Cellular Location

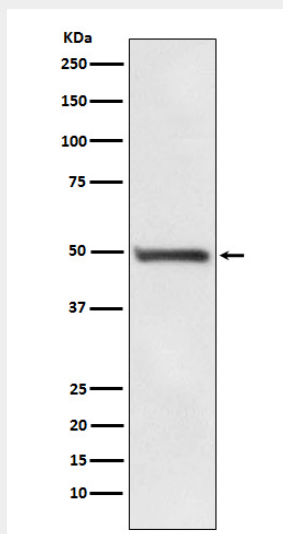
Nucleus.

RAD52 Antibody - Protocols

Provided below are standard protocols that you may find useful for product applications.

- [Western Blot](#)
- [Blocking Peptides](#)
- [Dot Blot](#)
- [Immunohistochemistry](#)
- [Immunofluorescence](#)
- [Immunoprecipitation](#)
- [Flow Cytometry](#)
- [Cell Culture](#)

RAD52 Antibody - Images



Western blot analysis of RAD52 expression in PC3 cell lysate.