

Renin Antibody
Rabbit mAb
Catalog # AP92455**Specification**

Renin Antibody - Product Information

Application	WB, FC
Primary Accession	P00797
Clonality	Monoclonal
Other Names	
Angiotensinogenase; HNFJ2; REN; Ren1; Renin;	
Isotype	Rabbit IgG
Host	Rabbit
Calculated MW	45057 Da

Renin Antibody - Additional Information

Dilution	WB~~1:1000 FC~~1:10~50
Purification	Affinity-chromatography
Immunogen	A synthesized peptide derived from human Renin
Description	Renin is a highly specific endopeptidase, whose only known function is to generate angiotensin I from angiotensinogen in the plasma, initiating a cascade of reactions that produce an elevation of blood pressure and increased sodium retention by the kidney.
Storage Condition and Buffer	Rabbit IgG in phosphate buffered saline , pH 7.4, 150mM NaCl, 0.02% sodium azide and 50% glycerol. Store at +4°C short term. Store at -20°C long term. Avoid freeze / thaw cycle.

Renin Antibody - Protein Information**Name** REN**Function**

Renin is a highly specific endopeptidase, whose only known function is to generate angiotensin I from angiotensinogen in the plasma, initiating a cascade of reactions that produce an elevation of blood pressure and increased sodium retention by the kidney.

Cellular Location

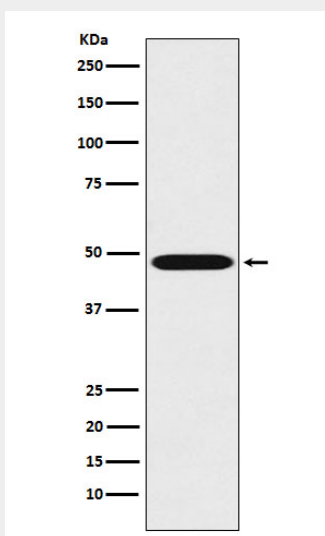
Secreted. Membrane. Note=Associated to membranes via binding to ATP6AP2.

Renin Antibody - Protocols

Provided below are standard protocols that you may find useful for product applications.

- [Western Blot](#)
- [Blocking Peptides](#)
- [Dot Blot](#)
- [Immunohistochemistry](#)
- [Immunofluorescence](#)
- [Immunoprecipitation](#)
- [Flow Cytometry](#)
- [Cell Culture](#)

Renin Antibody - Images



Western blot analysis of Renin expression in K562 cell lysate.