

**CRKII Antibody**  
**Rabbit mAb**  
**Catalog # AP92457**

## Specification

---

### CRKII Antibody - Product Information

Application	WB, FC, ICC, IP
Primary Accession	<a href="#">P46108</a>
Reactivity	Rat
Clonality	Monoclonal
<b>Other Names</b>	
CRK; CRKII; p38;	

Isotype	Rabbit IgG
Host	Rabbit
Calculated MW	33831 Da

### CRKII Antibody - Additional Information

Dilution	WB~~1:1000 FC~~1:10~50 ICC~~N/A IP~~N/A
Purification	Affinity-chromatography
Immunogen	A synthesized peptide derived from human CRKII
Description	The Crk-I and Crk-II forms differ in their biological activities. Crk-II has less transforming activity than Crk-I. Crk-II mediates attachment-induced MAPK8 activation, membrane ruffling and cell motility in a Rac-dependent manner. Involved in phagocytosis of apoptotic cells and cell motility via its interaction with DOCK1 and DOCK4.
Storage Condition and Buffer	Rabbit IgG in phosphate buffered saline , pH 7.4, 150mM NaCl, 0.02% sodium azide and 50% glycerol. Store at +4°C short term. Store at -20°C long term. Avoid freeze / thaw cycle.

### CRKII Antibody - Protein Information

**Name** CRK

#### Function

Involved in cell branching and adhesion mediated by BCAR1- CRK-RAPGEF1 signaling and activation of RAP1.

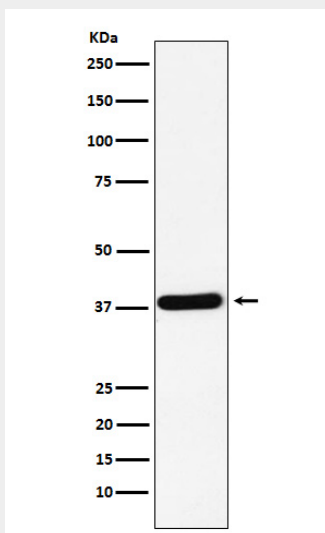
**Cellular Location**

Cytoplasm. Cell membrane. Note=Translocated to the plasma membrane upon cell adhesion.

**CRKII Antibody - Protocols**

Provided below are standard protocols that you may find useful for product applications.

- [Western Blot](#)
- [Blocking Peptides](#)
- [Dot Blot](#)
- [Immunohistochemistry](#)
- [Immunofluorescence](#)
- [Immunoprecipitation](#)
- [Flow Cytometry](#)
- [Cell Culture](#)

**CRKII Antibody - Images**

Western blot analysis of CRKII expression in K562 cell lysate.