

SAP97 Antibody
Rabbit mAb
Catalog # AP92460**Specification**

SAP97 Antibody - Product Information

Application	WB
Primary Accession	Q12959
Reactivity	Rat
Clonality	Monoclonal
Other Names	
DLG1; DLGH1; hDlg; SAP97;	
Isotype	Rabbit IgG
Host	Rabbit
Calculated MW	100455 Da

SAP97 Antibody - Additional Information

Dilution	WB~~1:1000
Purification	Affinity-chromatography
Immunogen	A synthesized peptide derived from human SAP97
Description	Essential multidomain scaffolding protein required for normal development (By similarity). Recruits channels, receptors and signaling molecules to discrete plasma membrane domains in polarized cells.
Storage Condition and Buffer	Rabbit IgG in phosphate buffered saline , pH 7.4, 150mM NaCl, 0.02% sodium azide and 50% glycerol. Store at +4°C short term. Store at -20°C long term. Avoid freeze / thaw cycle.

SAP97 Antibody - Protein Information**Name** DLG1 ([HGNC:2900](#))**Function**

Essential multidomain scaffolding protein required for normal development (By similarity). Recruits channels, receptors and signaling molecules to discrete plasma membrane domains in polarized cells. Promotes epithelial cell layer barrier function via maintaining cell- cell adhesion (By similarity). May also play a role in adherens junction assembly, signal transduction, cell proliferation, synaptogenesis and lymphocyte activation. Regulates the excitability of cardiac myocytes by modulating the functional expression of Kv4 channels. Functional regulator of Kv1.5 channel. During long-term depression in hippocampal neurons, it recruits ADAM10 to the plasma membrane (PubMed:23676497).

Cellular Location

Cell membrane; Peripheral membrane protein. Basolateral cell membrane. Endoplasmic reticulum membrane {ECO:0000250|UniProtKB:Q62696}. Postsynaptic density {ECO:0000250|UniProtKB:Q62696}. Synapse {ECO:0000250|UniProtKB:Q62696} Cell membrane, sarcolemma. Apical cell membrane. Cell junction. Cytoplasm Note=Colocalizes with EPB41 at regions of intercellular contacts Basolateral in epithelial cells (PubMed:12807908). May also associate with endoplasmic reticulum membranes. Mainly found in neurons soma, moderately found at postsynaptic densities (By similarity) {ECO:0000250|UniProtKB:Q62696, ECO:0000269|PubMed:10859302, ECO:0000269|PubMed:12807908, ECO:0000269|PubMed:8922391, ECO:0000269|PubMed:9192623}

Tissue Location

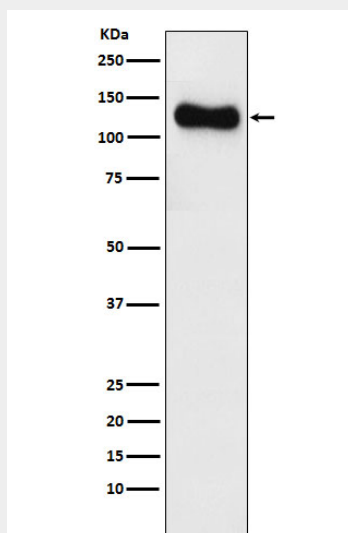
Abundantly expressed in atrial myocardium (at protein level). Expressed in lung fibroblasts, cervical epithelial and B-cells (at protein level). Expressed in the brain (at protein level) (PubMed:23676497). Widely expressed, with isoforms displaying different expression profiles.

SAP97 Antibody - Protocols

Provided below are standard protocols that you may find useful for product applications.

- [Western Blot](#)
- [Blocking Peptides](#)
- [Dot Blot](#)
- [Immunohistochemistry](#)
- [Immunofluorescence](#)
- [Immunoprecipitation](#)
- [Flow Cytometry](#)
- [Cell Culture](#)

SAP97 Antibody - Images



Western blot analysis of SAP97 expression in SH-SY5Y cell lysate.