

CSK Antibody
Rabbit mAb
Catalog # AP92466

Specification

CSK Antibody - Product Information

Application	WB, IHC
Primary Accession	P41240
Reactivity	Rat
Clonality	Monoclonal
Other Names	
C SRC; Csk A; CSK; P60 Src;	
Isotype	Rabbit IgG
Host	Rabbit
Calculated MW	50704 Da

CSK Antibody - Additional Information

Dilution	WB~~1:1000 IHC~~1:100~500
Purification	Affinity-chromatography
Immunogen	A synthesized peptide derived from human CSK
Description	Specifically phosphorylates 'Tyr-504' on LCK, which acts as a negative regulatory site. Can also act on the LYN and FYN kinases.
Storage Condition and Buffer	Rabbit IgG in phosphate buffered saline , pH 7.4, 150mM NaCl, 0.02% sodium azide and 50% glycerol. Store at +4°C short term. Store at -20°C long term. Avoid freeze / thaw cycle.

CSK Antibody - Protein Information

Name CSK

Function

Non-receptor tyrosine-protein kinase that plays an important role in the regulation of cell growth, differentiation, migration and immune response. Phosphorylates tyrosine residues located in the C-terminal tails of Src-family kinases (SFKs) including LCK, SRC, HCK, FYN, LYN, CSK or YES1. Upon tail phosphorylation, Src-family members engage in intramolecular interactions between the phosphotyrosine tail and the SH2 domain that result in an inactive conformation. To inhibit SFKs, CSK is recruited to the plasma membrane via binding to transmembrane proteins or adapter proteins located near the plasma membrane. Suppresses signaling by various surface receptors, including T-cell receptor (TCR) and B-cell receptor (BCR) by phosphorylating and maintaining inactive several positive effectors such as FYN or LCK.

Cellular Location

Cytoplasm. Cell membrane. Note=Mainly cytoplasmic, also present in lipid rafts

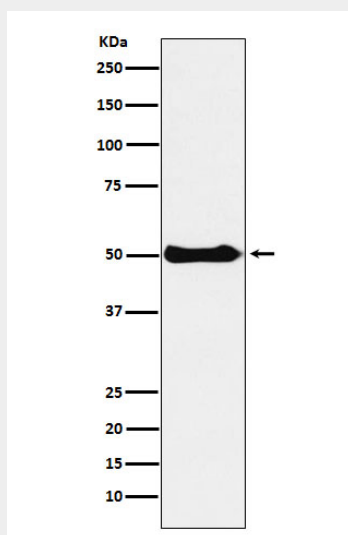
Tissue Location

Expressed in lung and macrophages.

CSK Antibody - Protocols

Provided below are standard protocols that you may find useful for product applications.

- [Western Blot](#)
- [Blocking Peptides](#)
- [Dot Blot](#)
- [Immunohistochemistry](#)
- [Immunofluorescence](#)
- [Immunoprecipitation](#)
- [Flow Cytometry](#)
- [Cell Culture](#)

CSK Antibody - Images

Western blot analysis of CSK expression in Ramos cell lysate.