

MADCAM1 Antibody
Rabbit mAb
Catalog # AP92467**Specification**

MADCAM1 Antibody - Product Information

Application	WB
Primary Accession	Q13477
Clonality	Monoclonal
Other Names	
MACAM1; Madcam1;	
Isotype	Rabbit IgG
Host	Rabbit
Calculated MW	40155 Da

MADCAM1 Antibody - Additional Information

Dilution	WB~~1:1000
Purification	Affinity-chromatography
Immunogen	A synthesized peptide derived from human MADCAM1
Description	Cell adhesion leukocyte receptor expressed by mucosal venules, helps to direct lymphocyte traffic into mucosal tissues including the Peyer patches and the intestinal lamina propria.
Storage Condition and Buffer	Rabbit IgG in phosphate buffered saline , pH 7.4, 150mM NaCl, 0.02% sodium azide and 50% glycerol. Store at +4°C short term. Store at -20°C long term. Avoid freeze / thaw cycle.

MADCAM1 Antibody - Protein Information**Name** MADCAM1**Function**

Cell adhesion leukocyte receptor expressed by mucosal venules, helps to direct lymphocyte traffic into mucosal tissues including the Peyer patches and the intestinal lamina propria. It can bind both integrin alpha-4/beta-7 and L-selectin, regulating both the passage and retention of leukocytes. Isoform 2, lacking the mucin-like domain, may be specialized in supporting integrin alpha-4/beta-7-dependent adhesion strengthening, independent of L-selectin binding.

Cellular Location

Membrane; Single-pass type I membrane protein.

Tissue Location

Highly expressed on high endothelial venules (HEV) and lamina propia venules found in the small

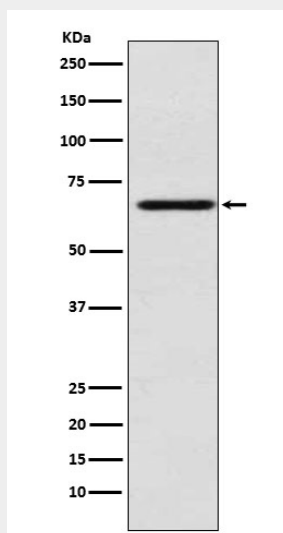
intestine, and to a lesser extent in the colon and spleen. Very low levels of expression found in pancreas and brain. Not expressed in the thymus, prostate, ovaries, testis, heart, placenta, lung, liver, skeletal muscle, kidney or peripheral blood leukocytes.

MADCAM1 Antibody - Protocols

Provided below are standard protocols that you may find useful for product applications.

- [Western Blot](#)
- [Blocking Peptides](#)
- [Dot Blot](#)
- [Immunohistochemistry](#)
- [Immunofluorescence](#)
- [Immunoprecipitation](#)
- [Flow Cytometry](#)
- [Cell Culture](#)

MADCAM1 Antibody - Images



Western blot analysis of MADCAM1 expression in HUVEC cell lysate.