

**DNAJA1 Antibody**  
**Rabbit mAb**  
**Catalog # AP92468****Specification**

---

**DNAJA1 Antibody - Product Information**

Application	WB, FC, IP
Primary Accession	<a href="#">P31689</a>
Reactivity	Rat
Clonality	Monoclonal
<b>Other Names</b>	
DJ2; DjA1; DNAJ2; Dnaja1; HDJ2; HSDJ; HSJ2; HSPF4; NEDD7;	
Isotype	Rabbit IgG
Host	Rabbit
Calculated MW	44868 Da

**DNAJA1 Antibody - Additional Information**

Dilution	WB~~1:1000 FC~~1:10~50 IP~~N/A
Purification	Affinity-chromatography
Immunogen	A synthesized peptide derived from human DNAJA1
Description	Co-chaperone of Hsc70. Seems to play a role in protein import into mitochondria.
Storage Condition and Buffer	Rabbit IgG in phosphate buffered saline , pH 7.4, 150mM NaCl, 0.02% sodium azide and 50% glycerol. Store at +4°C short term. Store at -20°C long term. Avoid freeze / thaw cycle.

**DNAJA1 Antibody - Protein Information****Name** DNAJA1**Synonyms** DNAJ2, HDJ2, HSJ2, HSPF4**Function**

Co-chaperone for HSPA8/Hsc70 (PubMed:<a href="http://www.uniprot.org/citations/10816573" target="\_blank">10816573</a>). Stimulates ATP hydrolysis, but not the folding of unfolded proteins mediated by HSPA1A (in vitro) (PubMed:<a href="http://www.uniprot.org/citations/24318877" target="\_blank">24318877</a>). Plays a role in protein transport into mitochondria via its role as co-chaperone. Functions as a co-chaperone for HSPA1B and negatively regulates the translocation of BAX from the cytosol to mitochondria in response to cellular stress, thereby protecting cells against apoptosis (PubMed:<a href="http://www.uniprot.org/citations/14752510" target="\_blank">14752510</a>). Promotes apoptosis in response to cellular stress mediated by exposure to anisomycin or UV (PubMed:<a href="http://www.uniprot.org/citations/14752510" target="\_blank">14752510</a>).

href="http://www.uniprot.org/citations/24512202" target="\_blank">24512202</a>).

#### Cellular Location

Membrane; Lipid- anchor. Cytoplasm. Microsome. Nucleus. Cytoplasm, perinuclear region. Mitochondrion Note=Primarily associated with microsomes. A minor proportion is associated with mitochondria (By similarity). Primarily cytoplasmic. A minor proportion is associated with nuclei.

#### Tissue Location

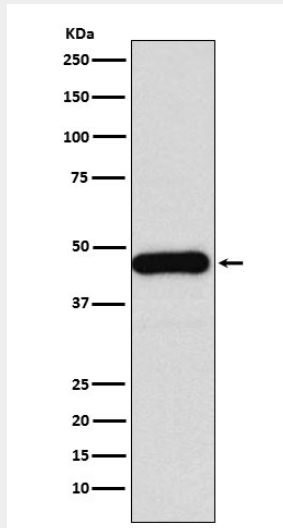
Ubiquitous. Isoform 2 is highly expressed in testis and lung, but detected at low levels in thymus, prostate, colon and liver.

### DNAJA1 Antibody - Protocols

Provided below are standard protocols that you may find useful for product applications.

- [Western Blot](#)
- [Blocking Peptides](#)
- [Dot Blot](#)
- [Immunohistochemistry](#)
- [Immunofluorescence](#)
- [Immunoprecipitation](#)
- [Flow Cytometry](#)
- [Cell Culture](#)

### DNAJA1 Antibody - Images



Western blot analysis of DNAJA1 expression in Jurkat cell lysate.