

**ERAP1 Antibody**  
**Rabbit mAb**  
**Catalog # AP92476****Specification**

---

**ERAP1 Antibody - Product Information**

Application	WB, IHC
Primary Accession	<a href="#">O9NZ08</a>
Reactivity	Rat
Clonality	Monoclonal
<b>Other Names</b>	
ALAP; Aminopeptidase PILS; APPILS; Arts1; Endoplasmic reticulum aminopeptidase 1; ERAAP; ERAAP1; Erap1; PILSA; PILSAP;	
Isotype	Rabbit IgG
Host	Rabbit
Calculated MW	107235 Da

**ERAP1 Antibody - Additional Information**

Dilution	WB~~1:1000 IHC~~1:100~500
Purification	Affinity-chromatography
Immunogen	A synthesized peptide derived from human ERAP1
Description	Aminopeptidase that plays a central role in peptide trimming, a step required for the generation of most HLA class I-binding peptides. Peptide trimming is essential to customize longer precursor peptides to fit them to the correct length required for presentation on MHC class I molecules. Strongly prefers substrates 9-16 residues long.
Storage Condition and Buffer	Rabbit IgG in phosphate buffered saline , pH 7.4, 150mM NaCl, 0.02% sodium azide and 50% glycerol. Store at +4°C short term. Store at -20°C long term. Avoid freeze / thaw cycle.

**ERAP1 Antibody - Protein Information****Name** ERAP1**Synonyms** APPILS, ARTS1, KIAA0525**Function**

Aminopeptidase that plays a central role in peptide trimming, a step required for the generation of most HLA class I-binding peptides. Peptide trimming is essential to customize longer precursor

peptides to fit them to the correct length required for presentation on MHC class I molecules. Strongly prefers substrates 9-16 residues long. Rapidly degrades 13-mer to a 9-mer and then stops. Preferentially hydrolyzes the residue Leu and peptides with a hydrophobic C-terminus, while it has weak activity toward peptides with charged C-terminus. May play a role in the inactivation of peptide hormones. May be involved in the regulation of blood pressure through the inactivation of angiotensin II and/or the generation of bradykinin in the kidney.

**Cellular Location**

Endoplasmic reticulum membrane; Single-pass type II membrane protein

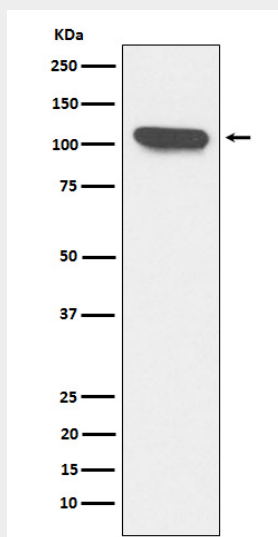
**Tissue Location**

Ubiquitous.

**ERAP1 Antibody - Protocols**

Provided below are standard protocols that you may find useful for product applications.

- [Western Blot](#)
- [Blocking Peptides](#)
- [Dot Blot](#)
- [Immunohistochemistry](#)
- [Immunofluorescence](#)
- [Immunoprecipitation](#)
- [Flow Cytometry](#)
- [Cell Culture](#)

**ERAP1 Antibody - Images**

Western blot analysis of ERAP1 expression in K562 cell lysate.