

DP1 Antibody
Rabbit mAb
Catalog # AP92479**Specification**

DP1 Antibody - Product Information

| | |
|--------------------|------------------------|
| Application | WB, FC |
| Primary Accession | Q14186 |
| Reactivity | Rat |
| Clonality | Monoclonal |
| Other Names | |
| DP1; DRTF1; TFD1; | |
| Isotype | Rabbit IgG |
| Host | Rabbit |
| Calculated MW | 45070 Da |

DP1 Antibody - Additional Information

| | |
|------------------------------|--|
| Dilution | WB~~1:1000 FC~~1:10~50 |
| Purification | Affinity-chromatography |
| Immunogen | A synthesized peptide derived from human DP1 |
| Description | Can stimulate E2F-dependent transcription. Binds DNA cooperatively with E2F family members through the E2 recognition site, 5'-TTTC[CG]CGC-3', found in the promoter region of a number of genes whose products are involved in cell cycle regulation or in DNA replication. |
| Storage Condition and Buffer | Rabbit IgG in phosphate buffered saline , pH 7.4, 150mM NaCl, 0.02% sodium azide and 50% glycerol. Store at +4°C short term. Store at -20°C long term. Avoid freeze / thaw cycle. |

DP1 Antibody - Protein Information**Name** TFD1**Synonyms** DP1**Function**

Can stimulate E2F-dependent transcription. Binds DNA cooperatively with E2F family members through the E2 recognition site, 5'-TTTC[CG]CGC-3', found in the promoter region of a number of genes whose products are involved in cell cycle regulation or in DNA replication (PubMed:7739537, PubMed:8405995). The E2F1:DP

complex appears to mediate both cell proliferation and apoptosis. Blocks adipocyte differentiation by repressing CEBPA binding to its target gene promoters (PubMed:20176812).

Cellular Location

Nucleus {ECO:0000250|UniProtKB:Q08639}. Cytoplasm {ECO:0000250|UniProtKB:Q08639}.

Note=Shuttles between the cytoplasm and nucleus and translocates into the nuclear compartment upon heterodimerization with E2F1. {ECO:0000250|UniProtKB:Q08639}

Tissue Location

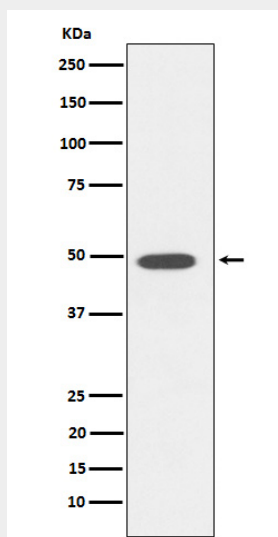
Highest levels in muscle. Also expressed in brain, placenta, liver and kidney. Lower levels in lung and pancreas. Not detected in heart

DP1 Antibody - Protocols

Provided below are standard protocols that you may find useful for product applications.

- [Western Blot](#)
- [Blocking Peptides](#)
- [Dot Blot](#)
- [Immunohistochemistry](#)
- [Immunofluorescence](#)
- [Immunoprecipitation](#)
- [Flow Cytometry](#)
- [Cell Culture](#)

DP1 Antibody - Images



Western blot analysis of DP1 expression in Raji cell lysate.